



Project INDIMA (ECHO/B/03 – 101017935)



Coordination Workshop

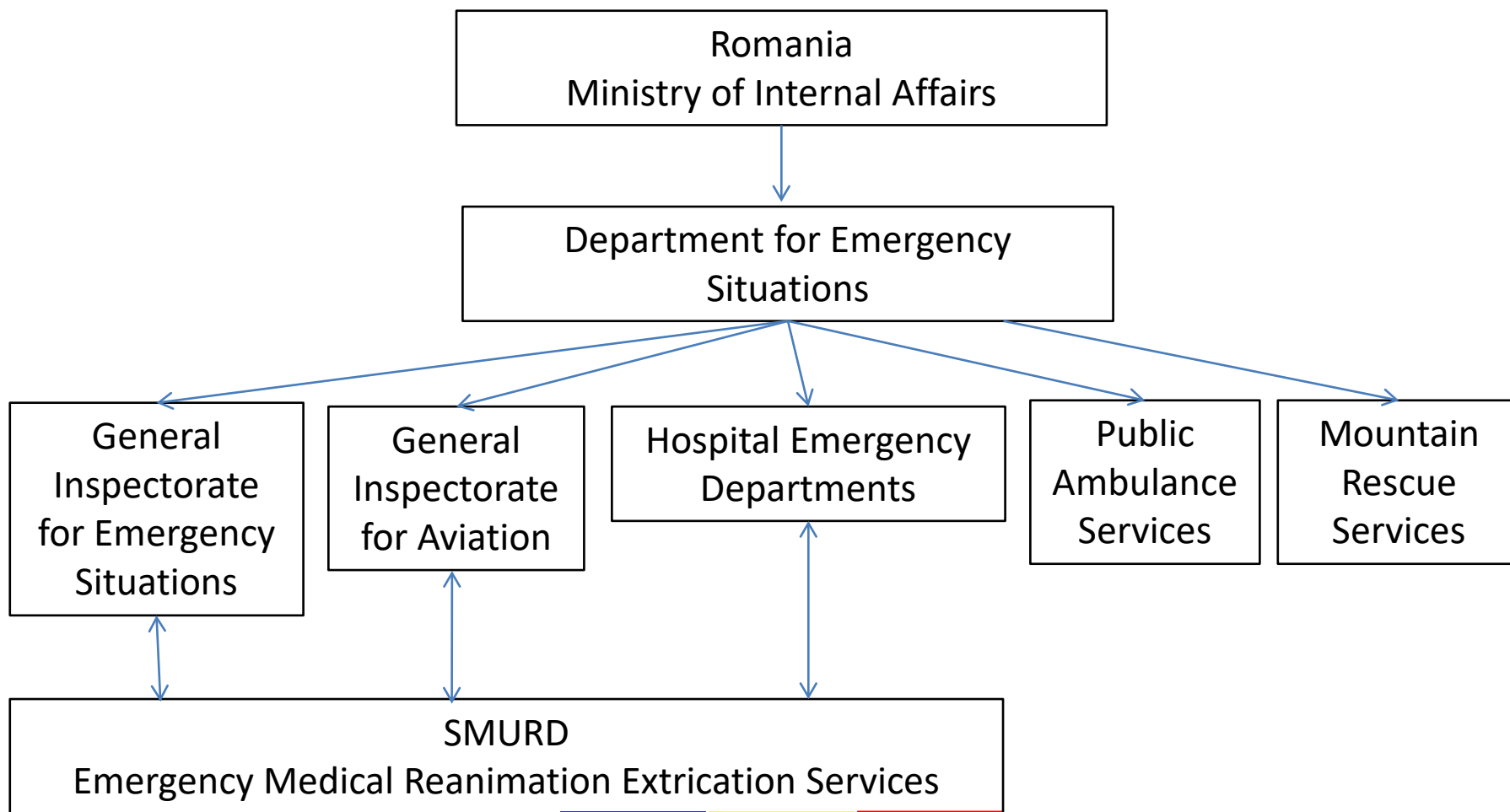
May, the 27th, 2021
Budapest, Hungary

Bogdan POP, M.D., Ph.D.

Tel. +40.21.312 25 47 – Fax +40.21.313 71 55 – e-mail: dsu@mai.gov.ro
1A, Piața Revoluției, 1st District, Bucharest, 010086, Romania



Department for Emergency Situations



Tel. +40.21.312 25 47 – Fax +40.21.313 71 55 – e-mail: dsu@mai.gov.ro
1A, Piața Revoluției, 1st District, Bucharest, 010086, Romania



Vehicles



Qualified First Aid Ambulance (type B2)



Mobile
Intensive Care
Unit (type C1)



Type B1/B2 Ambulance

Emergency
Medical Crew
(type C2)





Vehicles



C.B.R.N.



Personnel and Multiple Victims
Transport Truck





Advanced Medical Post

Disaster Response, Collective
Accidents and Calamities Truck



Advanced Medical Post

20-32 patients, 4 I.C.



Tel. +40.21.312 25 47 – Fax +40.21.313 71 55 – e-mail: dsu@mai.gov.ro
1A, Piața Revoluției, 1st District, Bucharest, 010086, Romania



Air Medical Evacuation

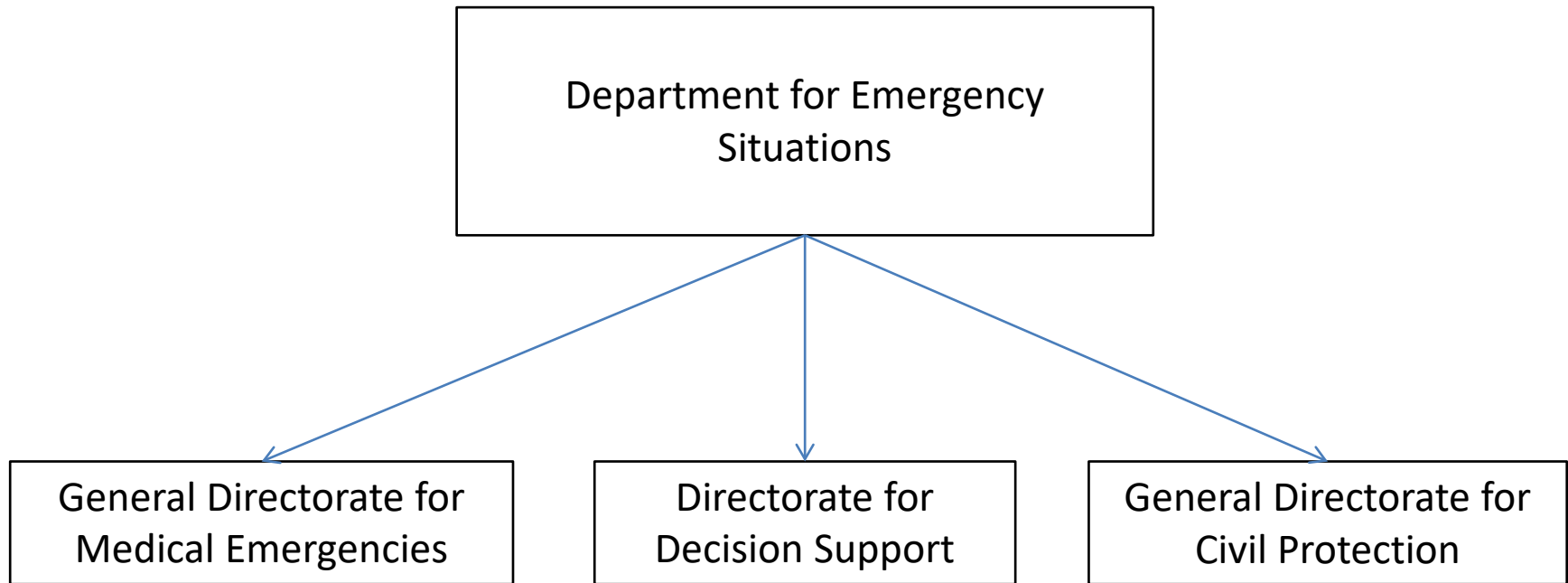


EC135 SMURD helicopter

Tel. +40.21.312 25 47 – Fax +40.21.313 71 55 – e-mail: dsu@mai.gov.ro
1A, Piața Revoluției, 1st District, Bucharest, 010086, Romania



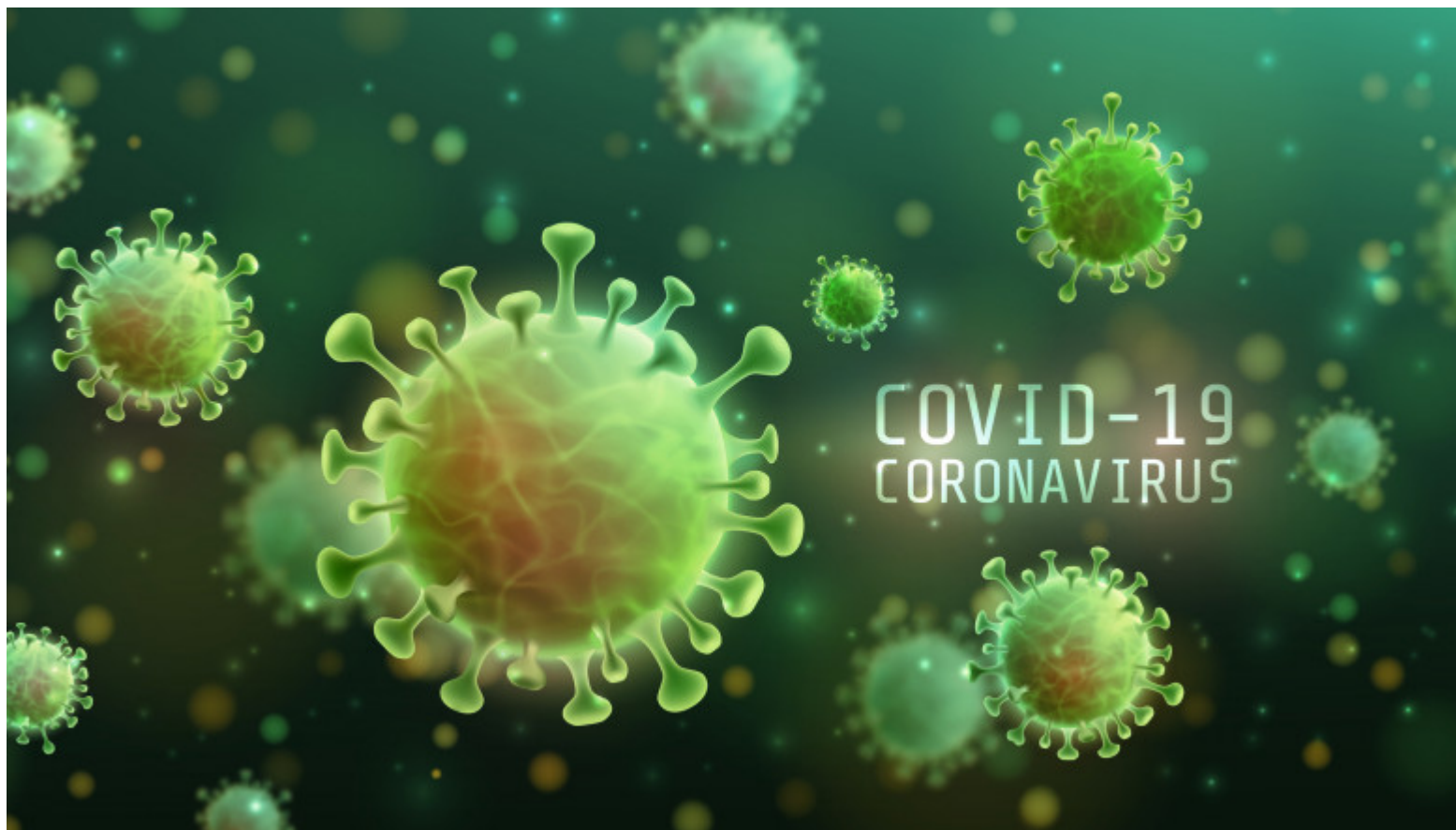
Department for Emergency Situations



Tel. +40.21.312 25 47 – Fax +40.21.313 71 55 – e-mail: dsu@mai.gov.ro
1A, Piața Revoluției, 1st District, Bucharest, 010086, Romania



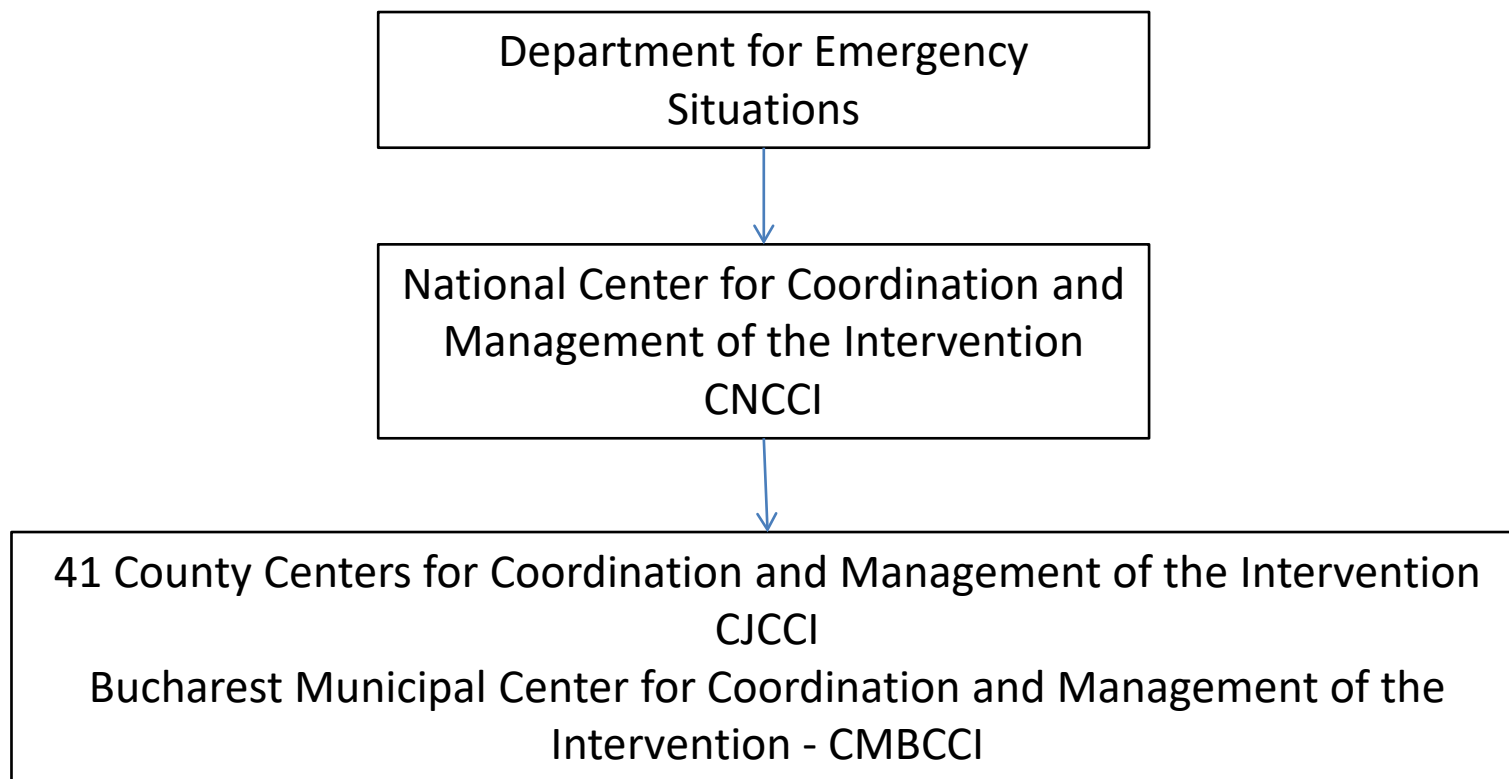
Department for Emergency Situations



Tel. +40.21.312 25 47 – Fax +40.21.313 71 55 – e-mail: dsu@mai.gov.ro
1A, Piața Revoluției, 1st District, Bucharest, 010086, Romania



Department for Emergency Situations





Department for Emergency Situations

18.03.2021 – The management of the emergency situations determined by the manifestation of the SARS-CoV-2 at national level was taken over by CNCCI

The National Institute of Public Health was put in charge with the coordination and monitoring at national level of the entire SARS-CoV-2 testing activities, collecting all data about the results and issuing official reports

All hospitals instituted crisis commands → CJCCI / CMBCCI

All county/Bucharest ambulance services - under the coordination of the Emergency County/Bucharest Inspectorates



Lessons Learnt

- ✓ achieving an integrated operational management at national level
- ✓ defining and establishing a section dedicated to the management of medical actions with specialized medical staff
- ✓ developing and updating a mechanism that allows the rapid implementation of decisions and prevention measures at all levels
- ✓ building the appropriate regulatory framework to allow agreements for refresh / renewal / additional emergency stocks



Lessons Learnt

- ✓ creating and regulating a unique integrated monitoring and management mechanism
- ✓ development and establishment of mechanisms for operationalization of additional isolation and treatment facilities with the support of various responsible institutions: DSU, local authorities, Red Cross, NGOs, private companies
- ✓ inability to purchase / sign contracts for essential materials and protective equipment from domestic manufacturers during the establishment and / or declaration of exceptional state



Thank you for your attention.

Questions?

No?

Great!



Project INDIMA (ECHO/B/03 – 101017935)

Bogdan POP, M.D., Ph.D.

Deputy General Director

Email: bogdan.pop@dsu.mai.gov.ro

Web: <http://www.dsu.mai.gov.ro/>

Ministry of Internal Affairs

Department for Emergency Situations

General Directorate for Medical Emergencies



Tel. +40.21.312 25 47 – Fax +40.21.313 71 55 – e-mail: dsu@mai.gov.ro
1A, Piața Revoluției, 1st District, Bucharest, 010086, Romania