

The role of experts

... in a DRM command staff - a brief overview

Ing. Alexander Stolar, MSc EUR ING



17. June 2021



STÖRFALL
MANAGEMENT STOLAR
Consulting Engineers



STÖRFALL
MANAGEMENT STOLAR
Consulting Engineers



Ing. Alexander Stolar, MSc EUR ING

Störfallmanagement Stolar e.U.

Engineering office for technical
environmental protection & chemical
laboratory

Freyungplatz 2
4850 Timelkam, Austria

Tel: +43 664 / 48 43 519

Mail: office@stolar.at

Web: stolar.at

FN 340169 z, LG Wels
UID: ATU65448517



STOLAR
LABS

- Public sworn and court-certified expert
- Upper Austrian Fire Service
- CBRN trainer (RN, CWA, TIC, ...)
- ...



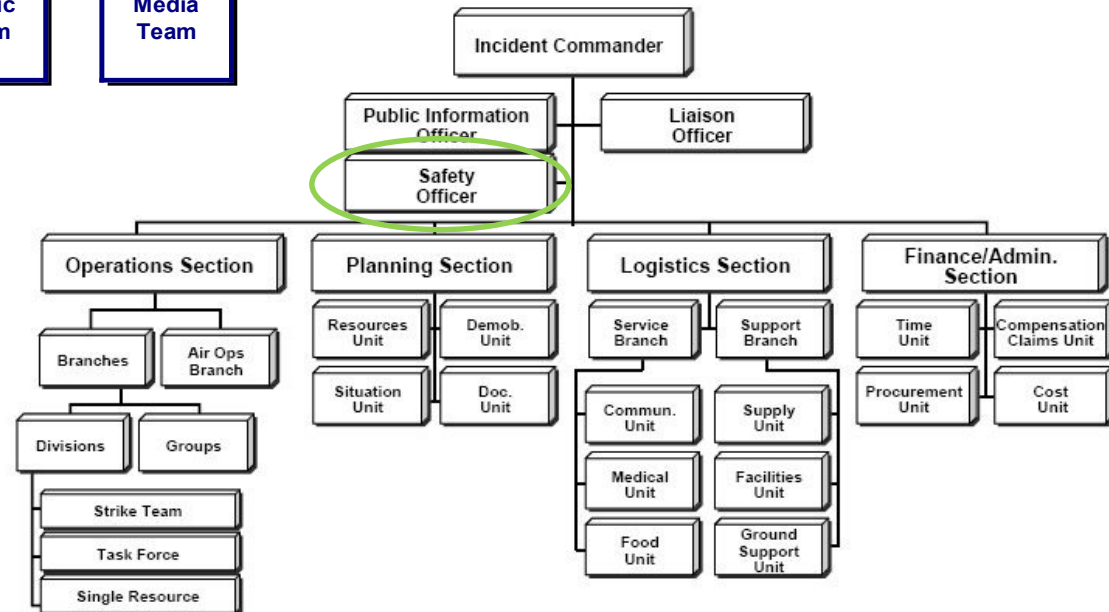
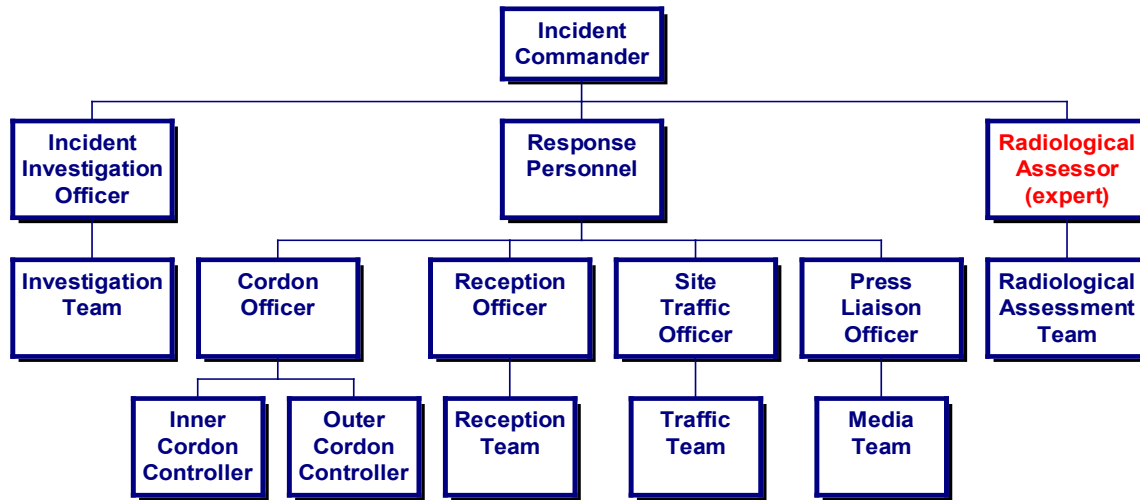
Command staff (with experts)

- A command staff (with experts) may be required when a situation develops, which cannot be dealt with as part of the routine operating procedures of the responding agency.



Tactical Command Structure

(2 examples, e.g in radiation protection)



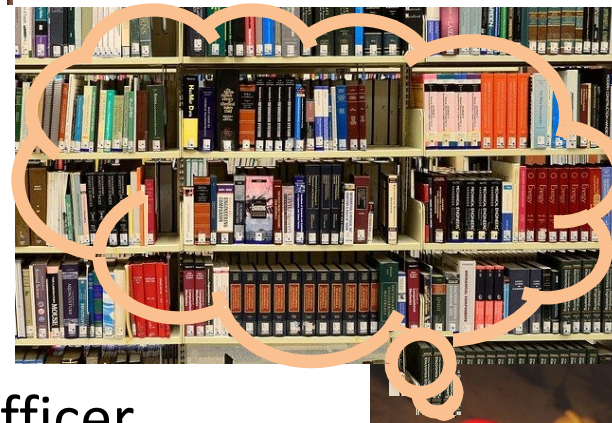
Same function - different terms

- **Specialist:** a person who concentrates primarily on a particular subject or activity; a person highly skilled in a specific and restricted field.
- **Expert:** a person who is very knowledgeable about or skilful in a particular area.
- **Assessor:** an assessor is trained, equipped and qualified to assess a situation and to provide either expert advice or guidance on local practices in a specific field.
- **SME:** A subject matter expert is an individual with a deep understanding of a particular job, process, department, function, technology, machine, material or type of equipment.



Key Command Personnel

- Incident Commander
- Command staff
- ...
- Expert(s)
- Incident Investigation Officer
- ...



Role of Incident Commander

- The role of the Incident Commander is to **direct** all operations at the scene of an incident.



Duties and responsibilities of Incident Commander

- To establish and maintain control of the scene.
- To establish an Incident Command Post at a suitable location.
- **To ensure that a hazard assessment is conducted.**
- To co-ordinate actions of agencies at the scene.
- To seek provision of manpower, communications and specialist resources.
- To appoint a Cordon Control Officer and to instigate cordon procedures.
- To appoint a Reception Officer and to establish a Reception Area for response personnel.
- To facilitate traffic management and to ensure the establishment of a Vehicle Marshalling Area.
- To appoint a Press Liaison Officer and to establish a Media Reception Point.



The expert ... (1)

- is subordinate to the head of the command organization (incident commander).
- advises the head and the members of the command organisation on (specific) hazards and the organisation's operational options or implementation.
- does not have command powers.
- is expected to be constantly informed about changes - i.e. to always be up to date on operational possibilities, potentials and accessibilities.



The expert ...

- Contact with potential requesters should be maintained and cultivated so that there is a basis of trust in case of deployment.
- Personal requirements:
 - high degree of sociability, organisational talent, persuasiveness, reliability, ability to work under pressure and a sense of responsibility.

Be aware of „special experts“!



- must have sufficient knowledge and experience of the principles and rules of command and control in operations as well as of the legal basis of hazard prevention and disaster control.



Role of Radiological Assessor (2)

- The role of the Radiological Assessor is to **assess the radiological hazard** at the scene of any incident, to **provide radiation protection for response personnel** and the public, and to **provide expert advice** on measures necessary to minimize any radiological hazard.

Manual for First Responders to a Radiological Emergency

JOINTLY SPONSORED BY
CTIF, IAEA, PAHO, WHO



IAEA
International Atomic Energy Agency

Source:



STÖRFALL
MANAGEMENT STOLAR
Consulting Engineers

Duties of Radiological Assessor (and his team)

- To conduct a radiological survey of the scene of an incident.
- To establish decontamination procedures at the scene.
- To provide expert advice on decontamination of the scene.
- To provide radiation protection support to response personnel.
- To estimate the dose received by response personnel or other persons at the scene of an incident.
- To provide expert advice on the seizure of radioactive materials.
- To maintain an inventory of monitoring and personal protective equipment.



My suggestion and question

- Experts or better “partners” are sought and found in “peacetime”.
- Do you know YOUR experts?
- Have they “played along” before or do they have experience?
- Structural engineers, CBRN, air accidents, natural hazards ...?
 - Make a list!!!
- Do you have contacts 24/7?





... and questions?



STÖRFALL
MANAGEMENT STOLAR
Consulting Engineers