



A World  
Leading SFI  
Research  
Centre



# Transboundary climate adaptation solutions: co-developing services to manage climate risks

*Denise McCullagh*

MaREI Centre, University College Cork

HOST INSTITUTION



PARTNER INSTITUTIONS



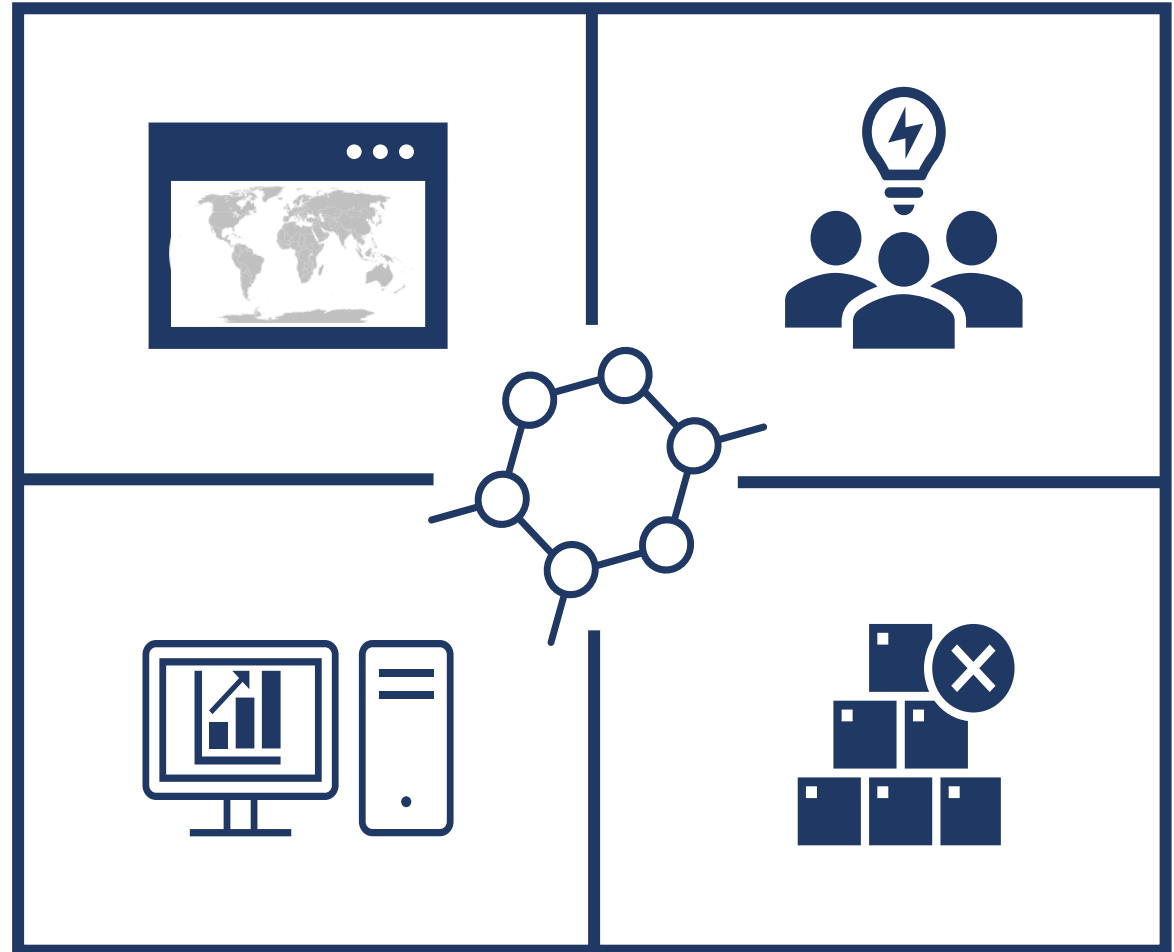


# Climate Services

Climate services provide climate related information and tools to support stakeholders to:

- Analyse hazards
- Visualise risk
- Analyse exposure
- Access vulnerability
- Implement solutions

For effective disaster risk management and climate adaptation, collaboration is necessary.



# Partnership Working

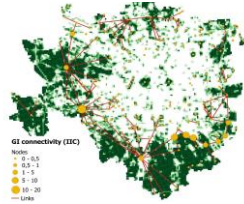


# Co-development of Services

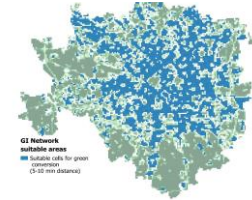
Green & grey areas



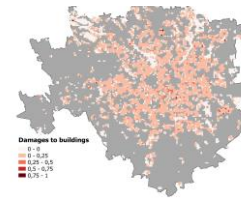
Identified GI network: Suitable for conversion



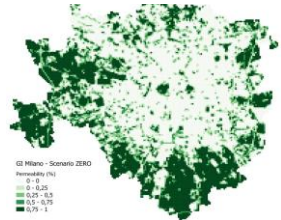
GI Network suitable areas



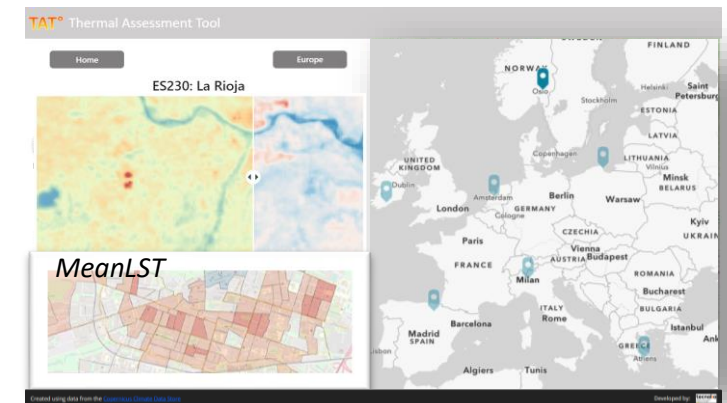
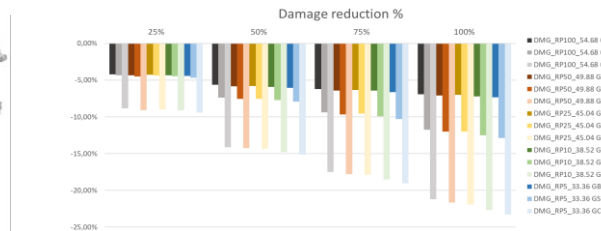
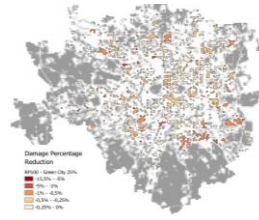
Physical damage



Green regeneration

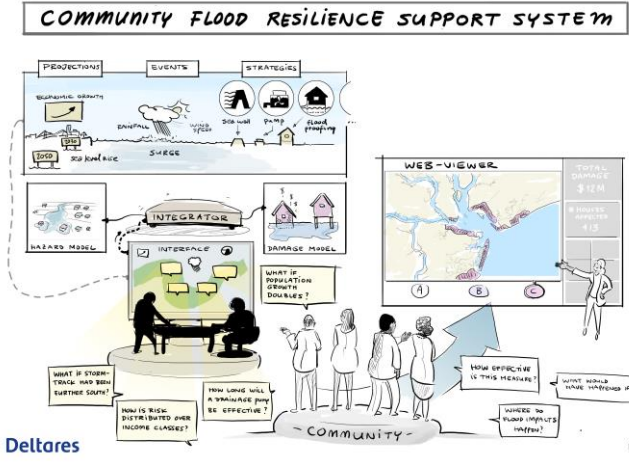
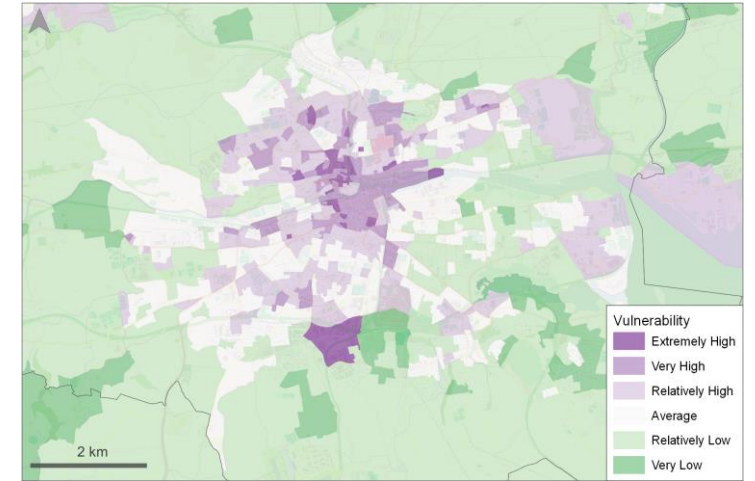


Damage reduction potential

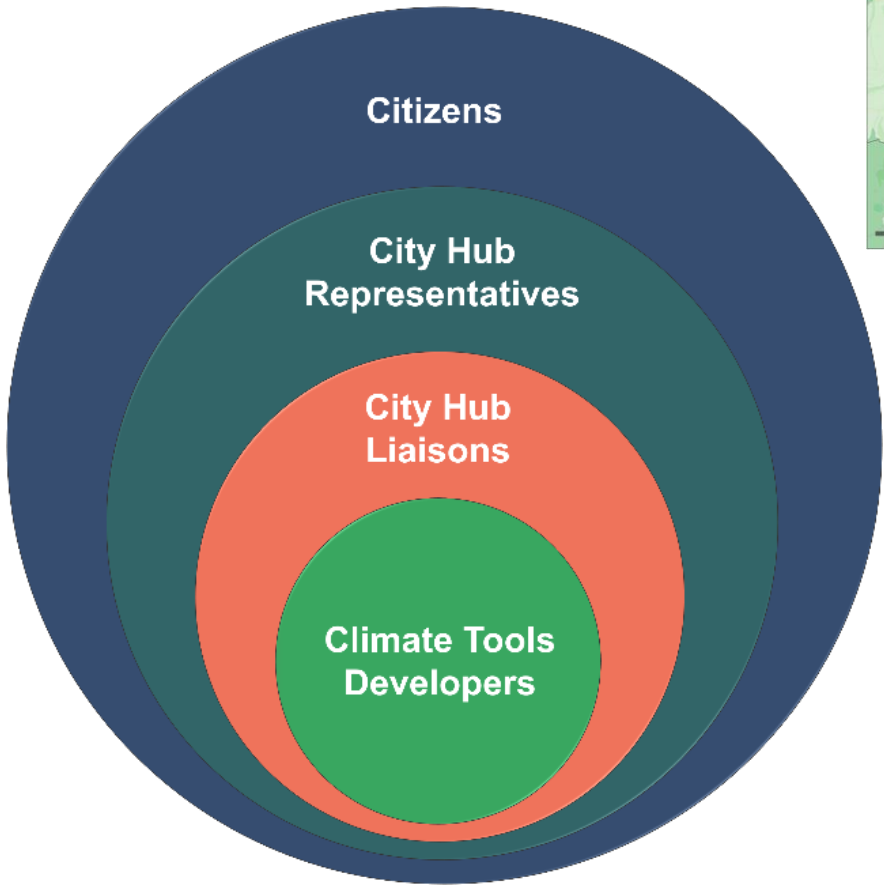


# REACH OUT

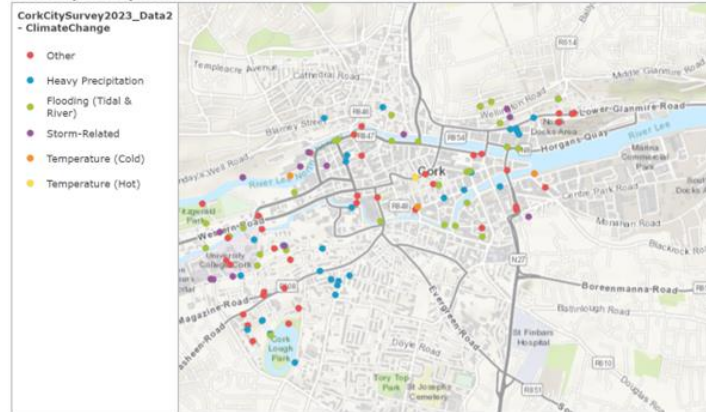
shaping climate resilient cities



Deltares



**Cork City Survey 2023**



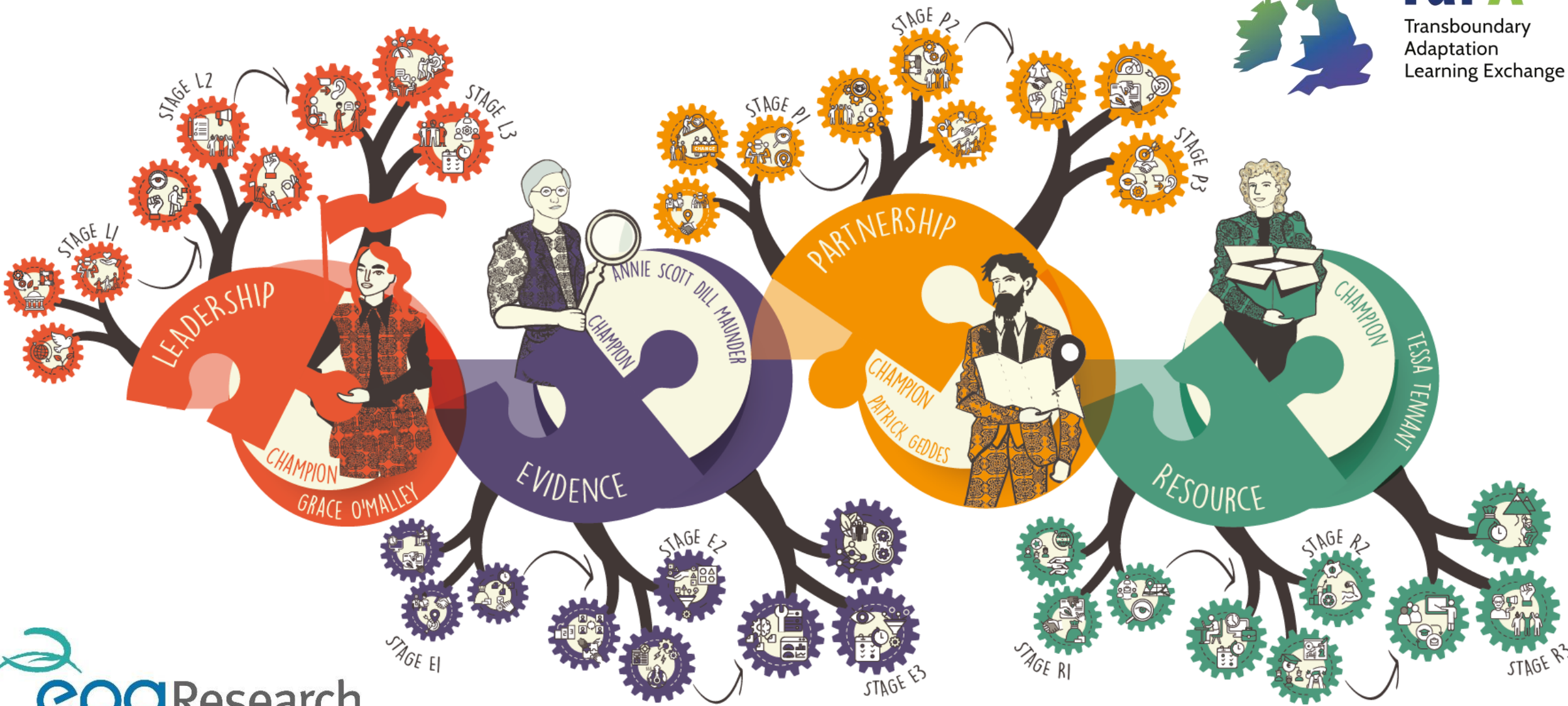
This project has received funding from the European Union's Horizon 2020 research and innovation programme under grant agreement No 101036599.





# TalX

Transboundary  
Adaptation  
Learning Exchange

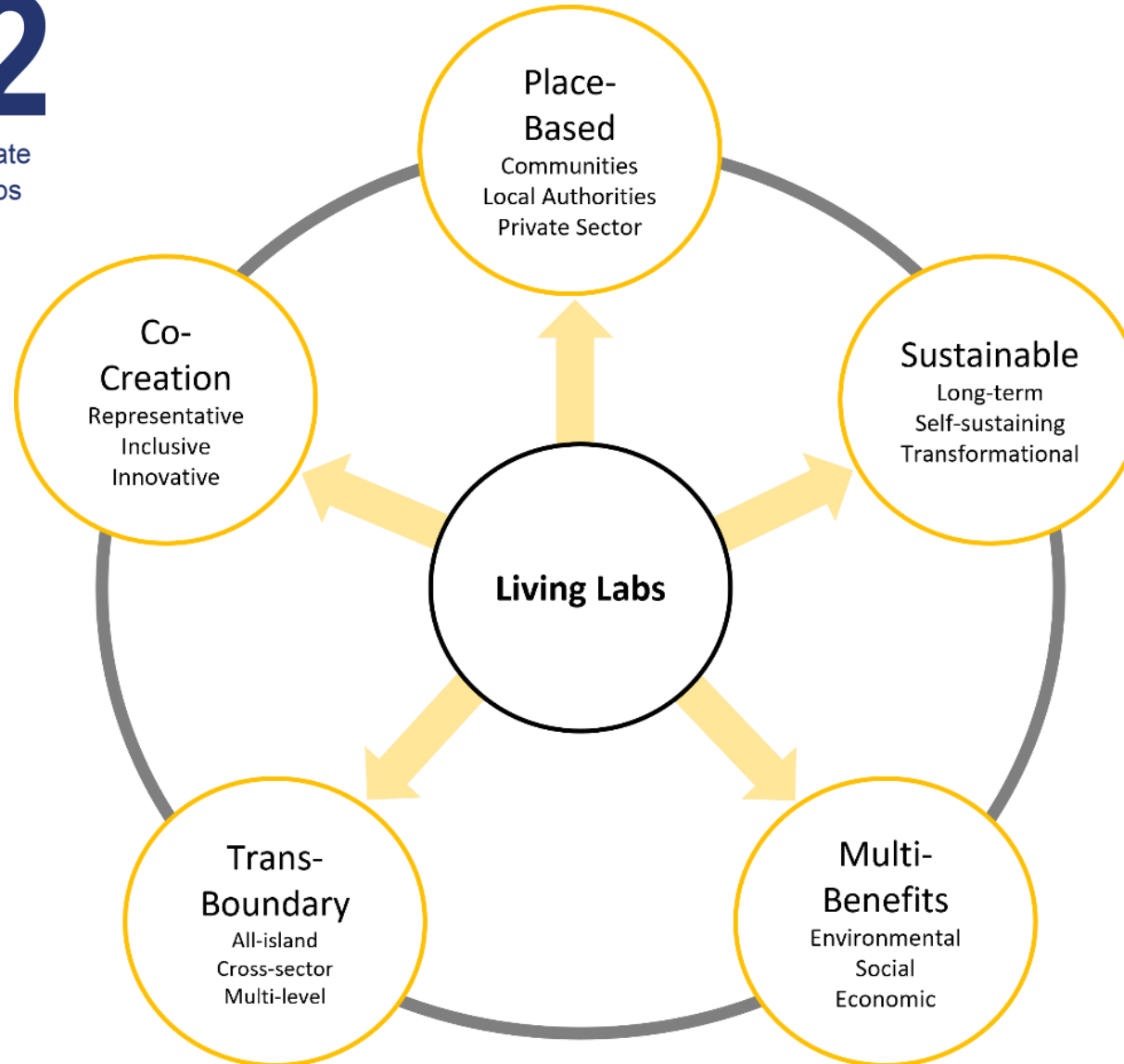






# Tal X2

Place-Based Climate  
Action Partnerships



Thank You  
Any Questions?