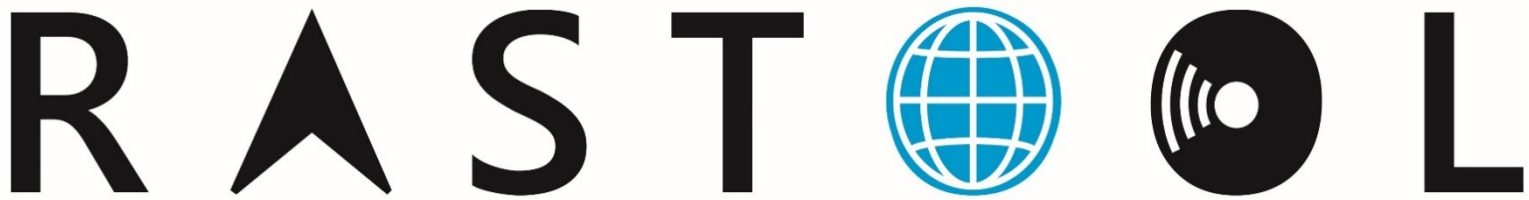


RASTOOL WORKSHOP



EGMS RASTOOL: European ground motion risk assessment tool

*What is the European Ground Motion Service?
I know, it provides millions of displacement measurements Europewide but...
Is it reliable? How to use it?*

The screenshot shows the EGMS RASTOOL interface. At the top, there are logos for the European Union, Copernicus, Land Monitoring, and the European Environment Agency. The main header is "European Ground Motion Service" with "Help Info" on the right. The interface features a map of Europe with a dense distribution of green and yellow data points. A search bar at the top right contains the text "Place/coordinates (lat lon)". A legend window is open on the right side, showing a color scale from -20 to 20 mm/year, a 100% zoom level, a 2.5 pixels resolution, and a "Medium (-20 to 20)" filter. The legend also includes a "Min Max" range and an "InSAR default" dropdown menu.

The RASTOOL Workshop is going to provide you knowledge, answers and **operational tools**, to include the European Ground Motion Service (EGMS) in your activities.

Target group: If you are involved in managing and monitoring territory, geohazards, structures, and infrastructures (like dams, pipelines, roads, between others), you are invited to participate.

When and where: 29/02/2024, National School of Civil Protection, Madrid (Spain)

Inscription: The **inscription is free. Moreover, a limited number of travel fees will be covered by the project.** An early registration is required: you can send your solicitude of inscription through this [link](#), better if **before October 31**.

Acknowledgment: This workshop is co-financed by the European Commission – Directorate General Humanitarian Aid and Civil Protection (DG-ECHO) and supported by the European Environment Agency (EEA) and by the Directorate-General for Civil Protection and Emergencies (DGPCE) of Spain.



Project Co-financed by the European Commission
Directorate General Humanitarian Aid and Civil
Protection (DG-ECHO)
UCPM-2021-PP: UCPM-PJG-101048474

CONTACTS:

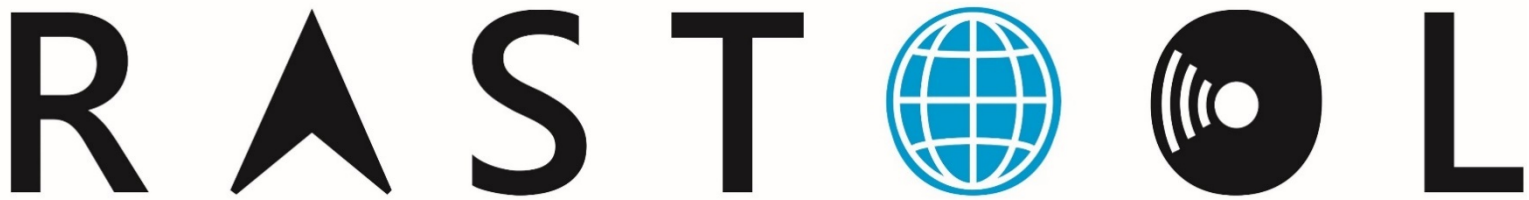
Email: rastool@cttc.es

RASTOOL website: <https://rastool.cttc.es/>

Inscriptions at: <https://rastool-form.cttc.es/>



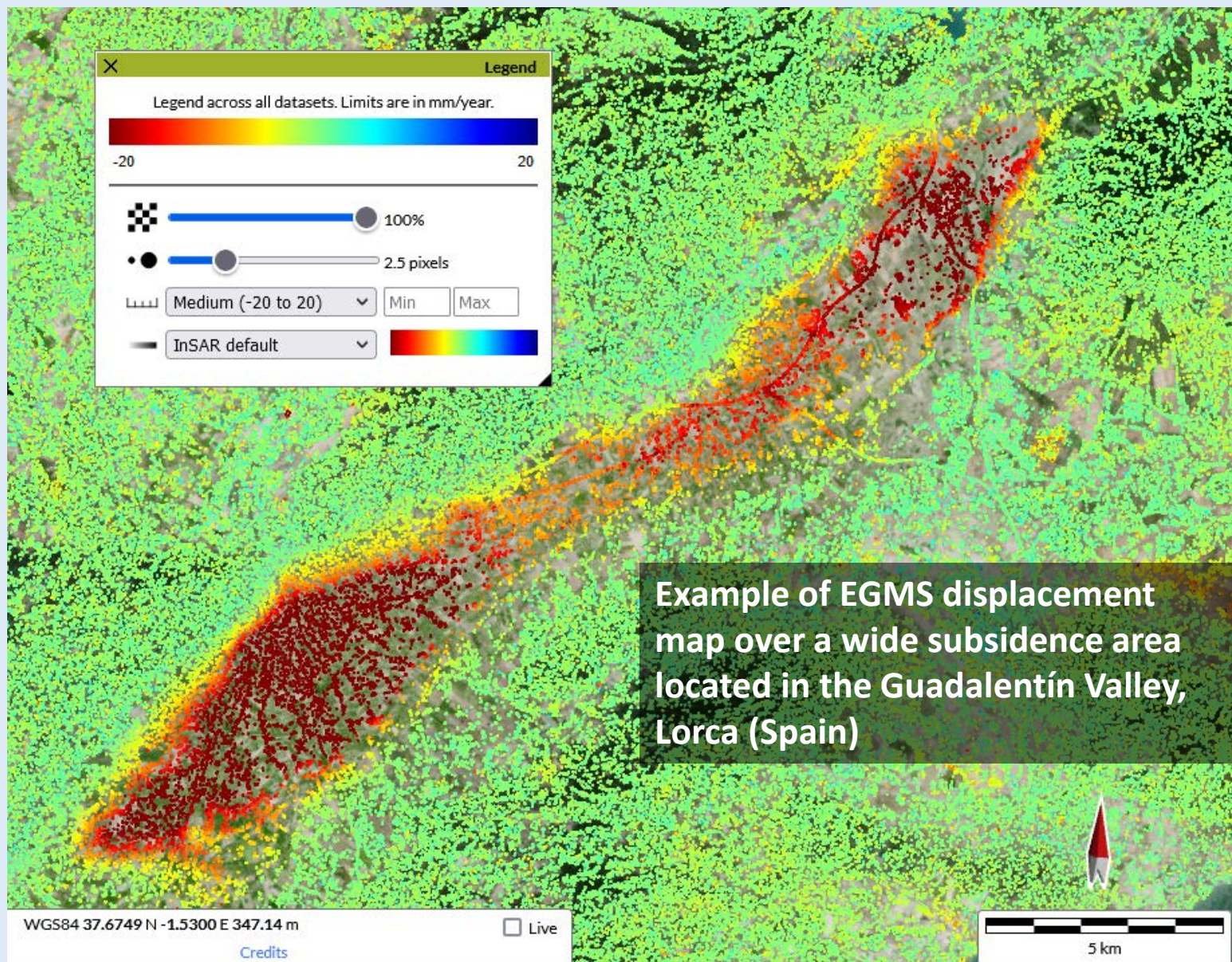
RASTOOL WORKSHOP



EGMS RASTOOL: European ground motion risk assessment tool

The EGMS

The EGMS is an open and free service that allows to visualize and download a huge number of **displacement measurement points** with **millimetric precision**.



Example of EGMS displacement map over a wide subsidence area located in the Guadalentín Valley, Lorca (Spain)



Project Co-financed by the European Commission
Directorate General Humanitarian Aid and Civil
Protection (DG-ECHO)
UCPM-2021-PP: UCPM-PJG-101048474

CONTACTS:

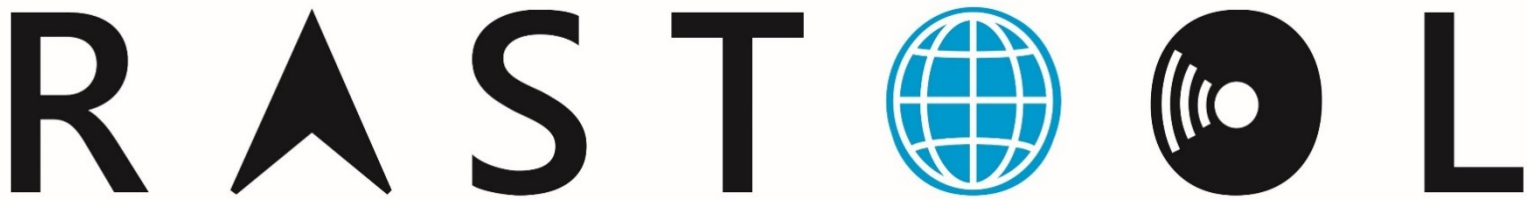
Email: rastool@cttc.es

RASTOOL website: <https://rastool.cttc.es/>

Inscriptions at: <https://rastool-form.cttc.es/>



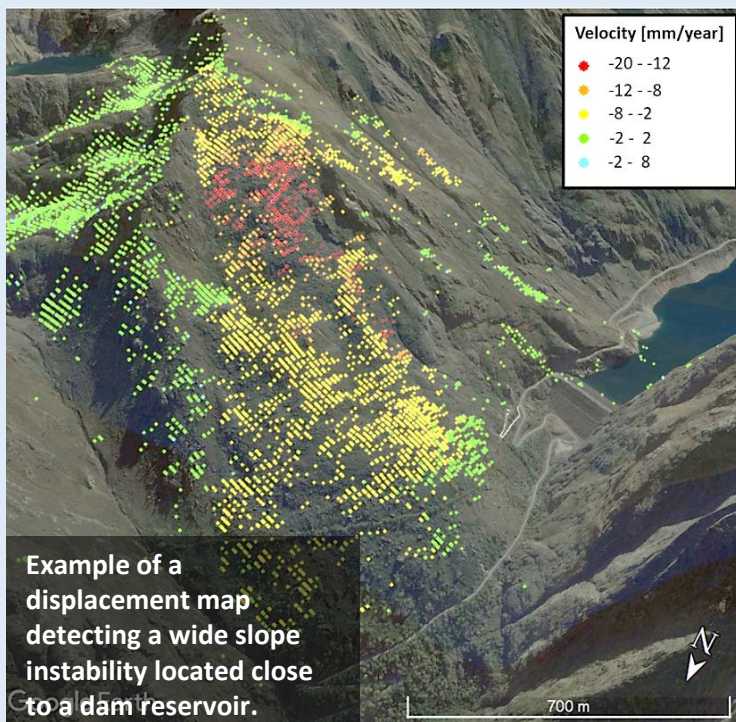
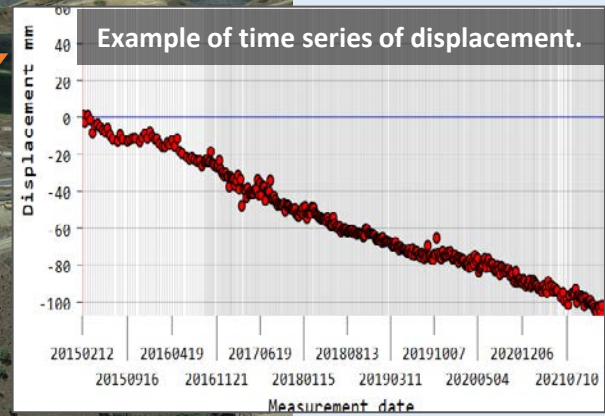
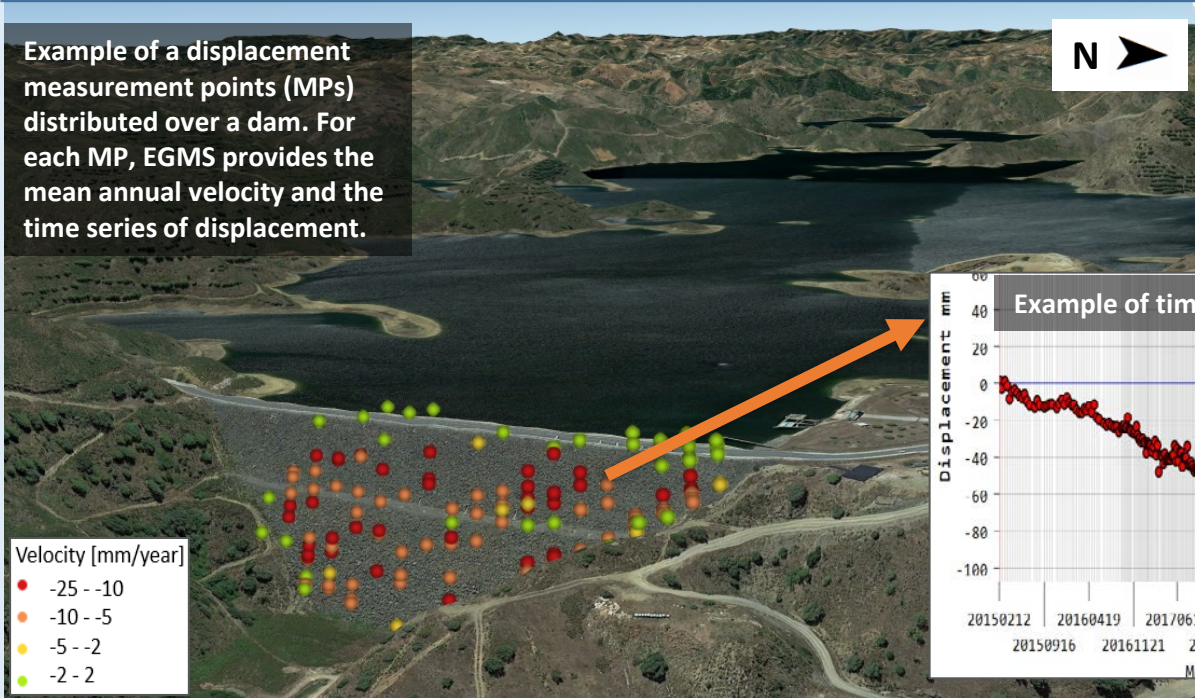
RASTOOL WORKSHOP



EGMS RASTOOL: European ground motion risk assessment tool

The EGMS

Example of a displacement measurement points (MPs) distributed over a dam. For each MP, EGMS provides the mean annual velocity and the time series of displacement.



The EGMS represents an innovative and valuable source of information for both geohazards, and human-activities related ground displacements. Allowing a **prompt detection** of moving areas, it represents an important support for **territorial management and geohazard risk prevention**. Giving an unprecedented high density and spatially distributed measurements, EGMS and satellite interferometry reduces the monitoring costs for **structures and infrastructures, mining activities, consolidation or stabilization works**, between others.



Project Co-financed by the European Commission
Directorate General Humanitarian Aid and Civil
Protection (DG-ECHO)
UCPM-2021-PP: UCPM-PJG-101048474

CONTACTS:

Email: rastool@cttc.es

RASTOOL website: <https://rastool.cttc.es/>

Inscriptions at: <https://rastool-form.cttc.es/>



RASTOOL WORKSHOP

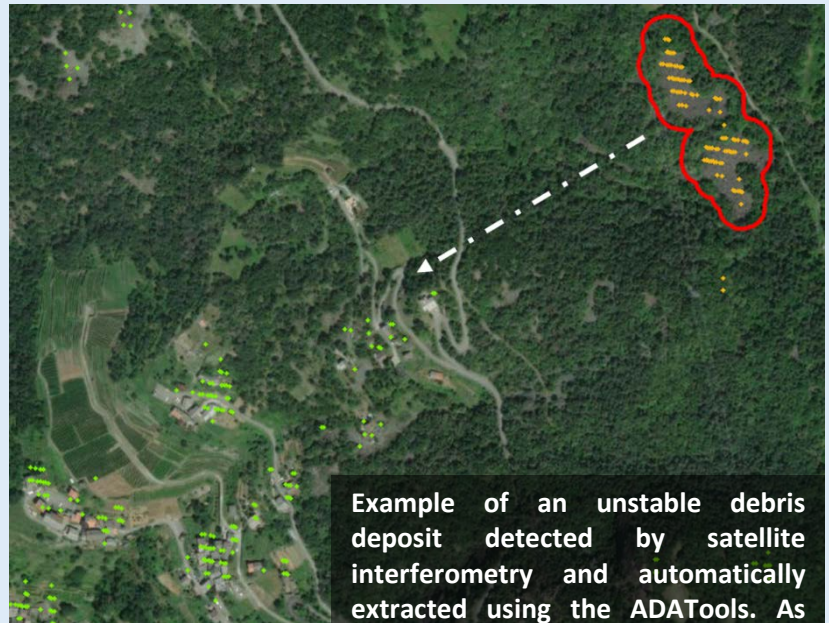
R A S T O O L

EGMS RASTOOL: European ground motion risk assessment tool

The ADATools: simplifying the EGMS use

The aim of RASTOOL is to automatize the extraction of information from the wide areas and huge amount of EGMS data. **The ADATools** allow to simplify the use, and generate EGMS derived products that are easy, synthetic, and operational.

Specifically, the tools allows to automatically **detect and extract the Active Deformation Areas (ADAs)**, make a **preliminary interpretation** (is it a landslide, subsidence, sinkhole....?) and **temporal characterization** of the extracted ADAs, and **assess the potential impact to structure and infrastructures**.



Example of an unstable debris deposit detected by satellite interferometry and automatically extracted using the ADATools. As potential source of debris flow, it could have an impact to the building located downslope.

RASTOOL Consortium



Centre Tecnològic de
Telecomunicacions de Catalunya



AUTORIDADE NACIONAL
DE EMERGENCIA E PROTECCAO CIVIL



UNIVERSITA'
DEGLI STUDI
FIRENZE



Project Co-financed by the European Commission
Directorate General Humanitarian Aid and Civil
Protection (DG-ECHO)

UCPM-2021-PP: UCPM-PJG-101048474

CONTACTS:

Email: rastool@cttc.es

RASTOOL website: <https://rastool.cttc.es/>

Inscriptions at: <https://rastool-form.cttc.es/>

