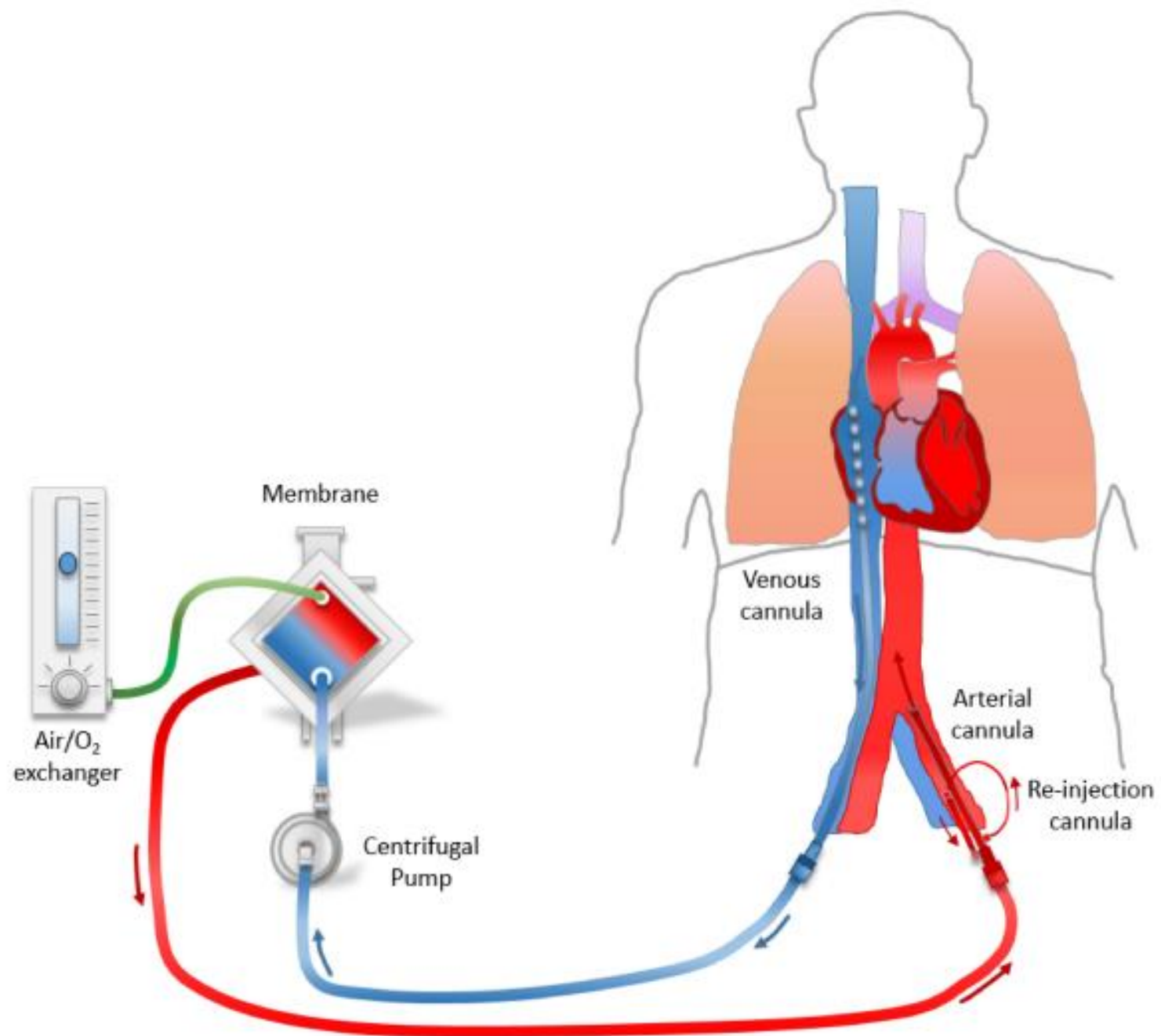


Extracorporeal CPR

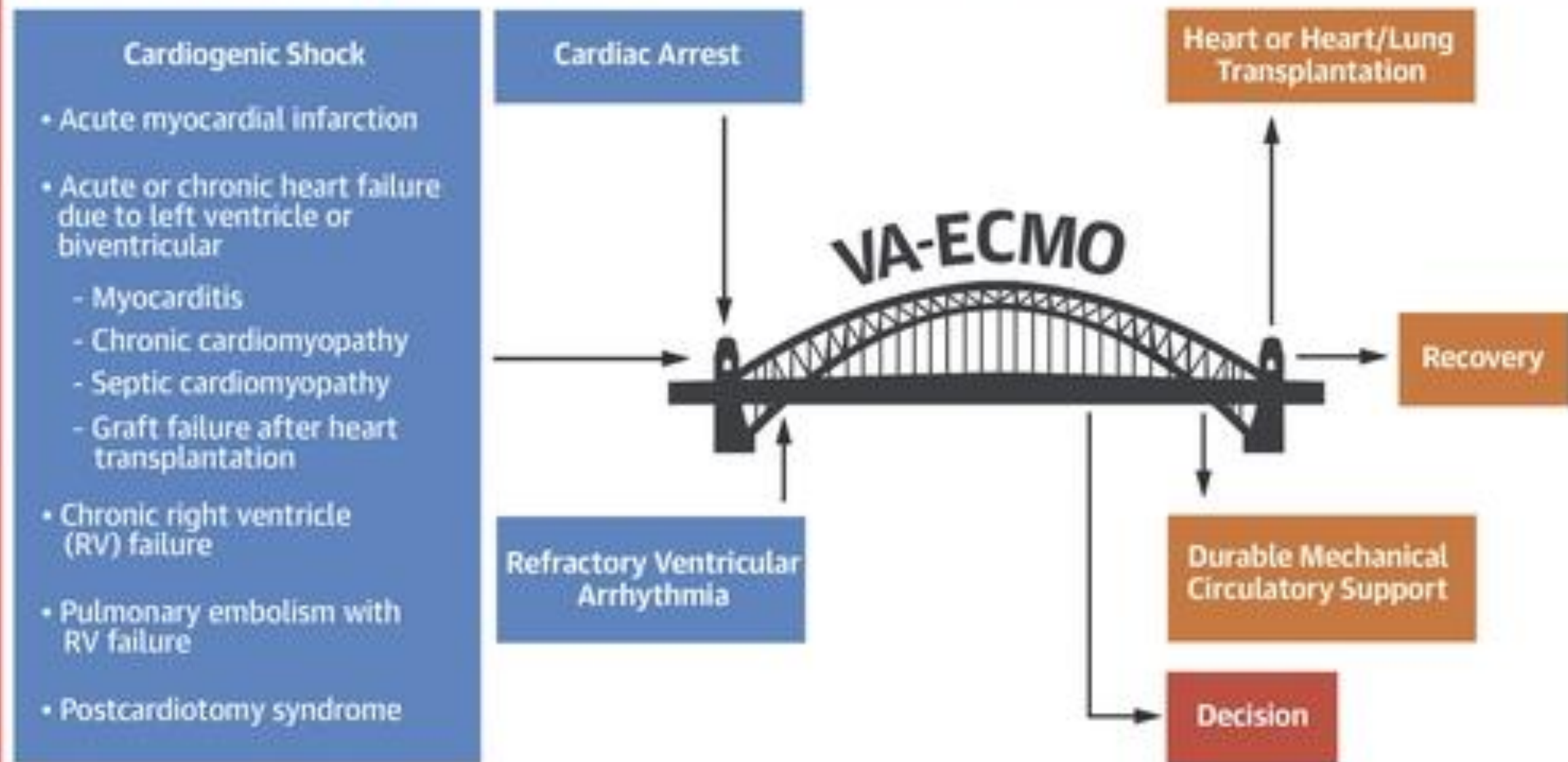
Gustavo Nobre de Jesus

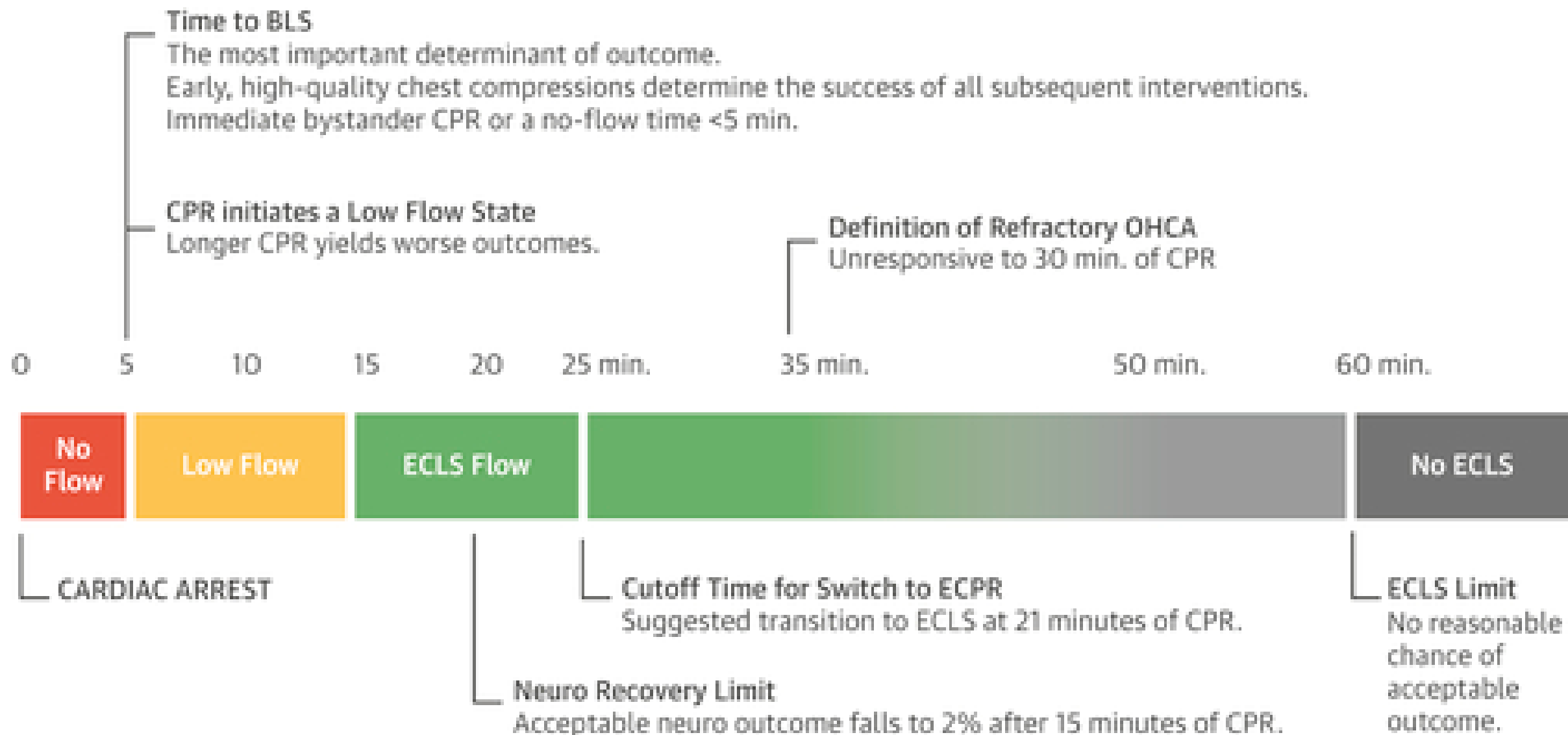
Hospital de Santa Maria, Lisboa

Gustavo.jesus@chln.min-saúde.pt



CENTRAL ILLUSTRATION: VA-ECMO Is a Bridge





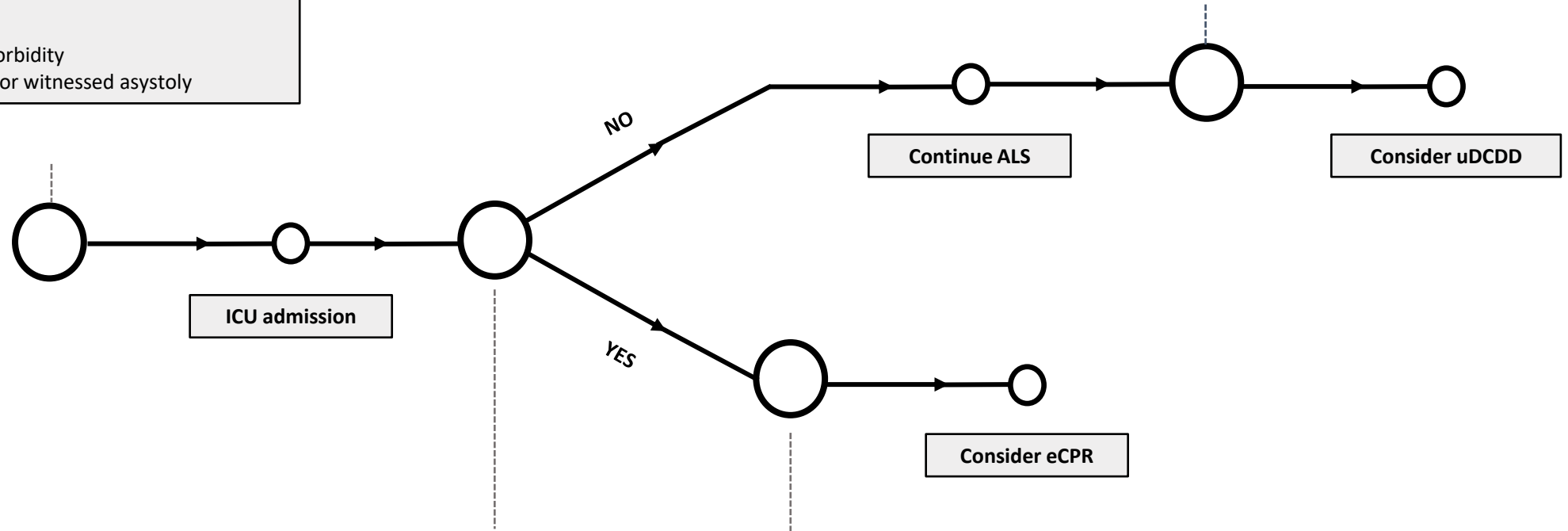
A combined eCPR and organ donation program after uncontrolled circulatory death

Eligible criteria for ICU admission:

1. CA \geq 10 minutes
2. Adult \leq 65 years
3. No significant comorbidity
4. No asystolic rhythm or witnessed asystoly

Eligible criteria for uDCDD:

1. Total CA time $<$ 240 minutes
2. Time until BLS $<$ 15 minutes
3. Time until ALS $<$ 30 minutes
4. ALS \geq 30 minutes



Eligible criteria for eCPR:

1. Reversible cause for rCA + No flow \leq 5 minutes + Time since CA until ICU admission \leq 45 minutes
- or
2. Signs of ROSC during ALS even if time until eCPR $>$ 60 minutes, but $<$ 90 minutes



Extracorporeal CPR

Gustavo Nobre de Jesus

Hospital de Santa Maria, Lisboa

Gustavo.jesus@chln.min-saúde.pt