

The Emergency Response Coordination Centre (ERCC) analytical services

06 June 2025

Auriane Denis-Loupot, ERCC Analytical Team - DG ECHO

Purpose

- Introduce DG ECHO's scope of work
- Zoom in on the EU civil protection mechanism and the Emergency Response Coordination Centre (ERCC)
- Present the ERCC's analytical services and tools for emergencies

European Civil Protection & Humanitarian Aid Operations

DG ECHO at a glance

	HUMANITARIAN AID	CIVIL PROTECTION
What?	DG ECHO as lead donor : fund humanitarian programmes, conduct humanitarian advocacy / diplomacy	DG ECHO as coordinator : voluntary contributions of assistance from Member/Participating States
How much?	EUR 1,8 billion (initial 2024)	EUR 256 million (initial 2024)
To whom?	Affected populations, through implementing partners	Governments of disaster affected countries
Geographic scope?	Third countries	Inside and outside the EU
Type of disaster?	Natural and man-made disasters (complex emergencies, wars, conflicts, forgotten crises etc.)	Natural and man-made disasters (complex emergencies exceptional)
Timescale?	Immediate aftermath of crisis, but also protracted situations, depending on needs / other instruments	In the majority of cases focus on acute phase after a disaster. However, also long-term operations, e.g. Ukraine



The EU Civil Protection Mechanism & the Emergency Response Coordination Centre (ERCC)

When a disaster strikes, national authorities across the world can activate the **EU Civil Protection Mechanism** to request coordinated assistance



by all EU Member States



10 Participating States





Emergency Response Coordination Centre (ERCC)



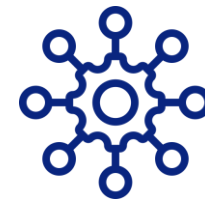
Monitors disasters
around the globe



Maps disaster
risks

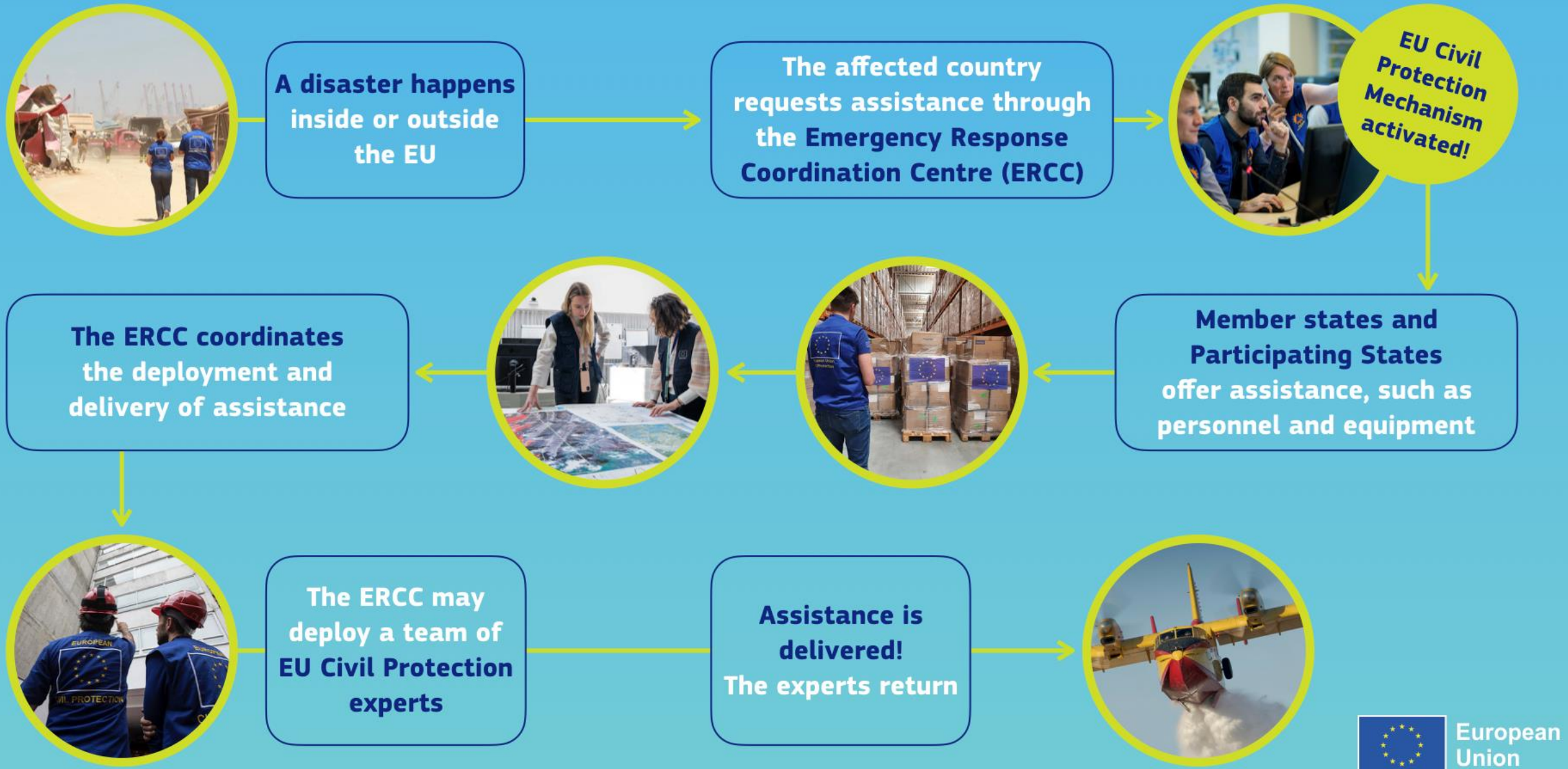


Provides real-time
information



Coordinates joint
European response
operations

Do you know how the **EU Civil Protection Mechanism** works?

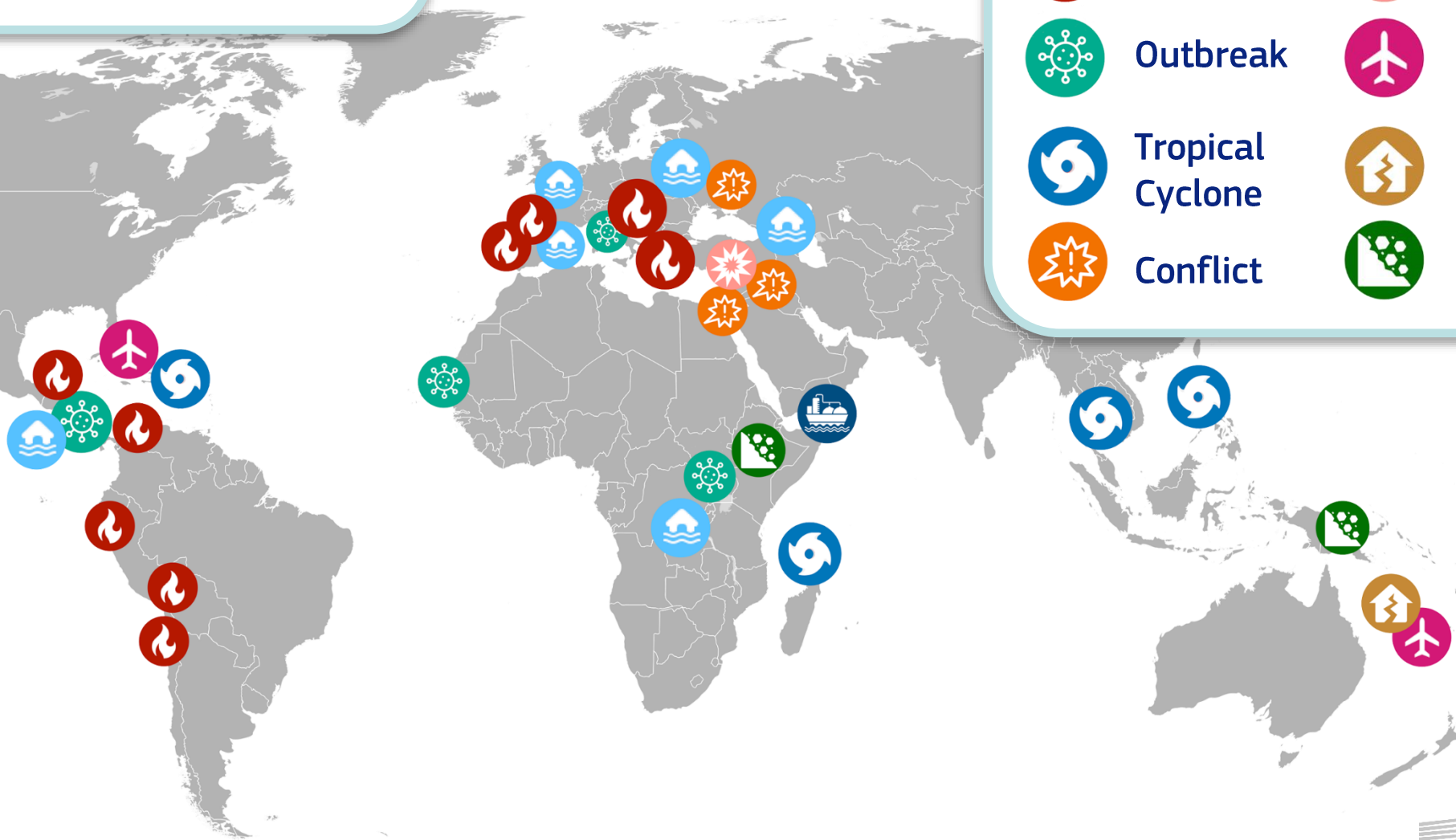


Since its creation in 2001 until January 2025,
the **EU Civil Protection Mechanism**
has been activated for **770 emergencies**



EU Civil Protection Mechanism

59 activations in 2024



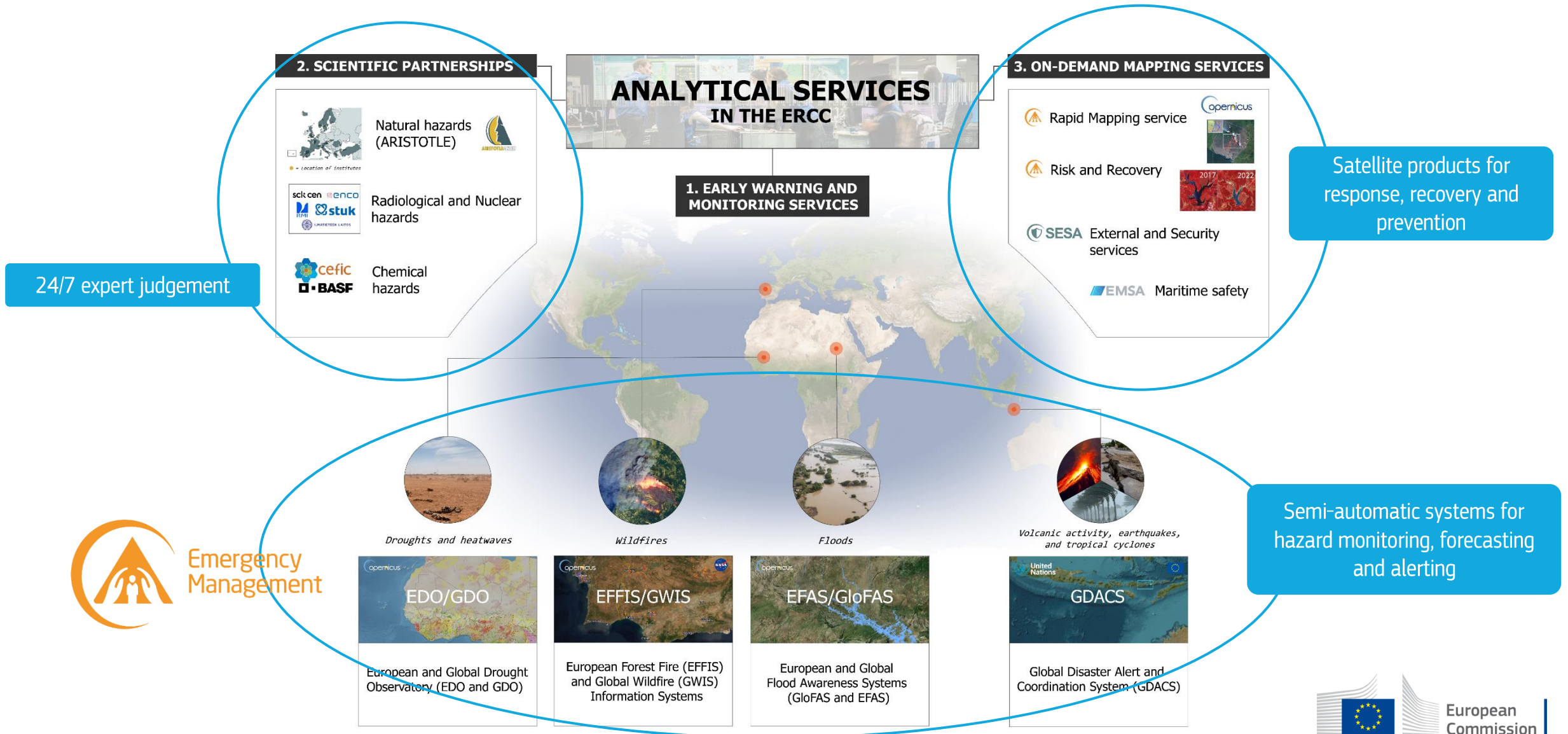
ERCC Analytical Team – How do we work?

How big? How bad?

Can we expect a request for assistance?



Analytical services – Before & during emergencies



ERCC Analytical Team - How do we work?

Data inputs

- Early warning systems (models)
- Scientific partnerships
- Satellite imagery
- Media
- National authorities (CP, met etc.)
- Field network, EU delegations and partners (UN, NGOs etc)

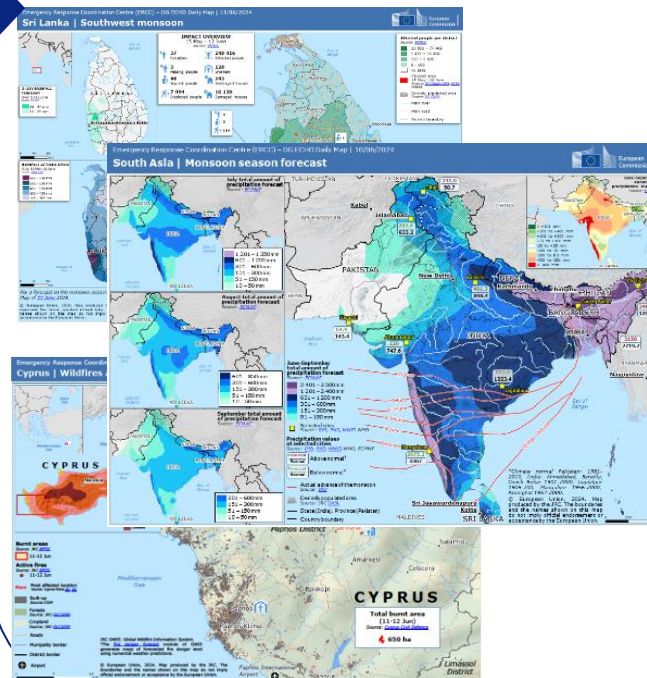
Science and operation interface

Processing, analyzing, integrating, synthesizing

Operational advice for decision making

Mapping capacity

(situational maps, identification of areas of interest for satellite imagery etc.)



Situational analysis

(analytical briefings, emergency updates, monitoring and forecasting)



- Mobilisation of response capacities
- Expert deployment
- Security
- Follow-up activities

Public

Limited distribution

How is this information used? Who benefits from it?



President of the European Commission, Ursula von der Leyen, greets an EU liaison officer in Slovenia. © European Union, 2023 (photographer: Dali Bendi)



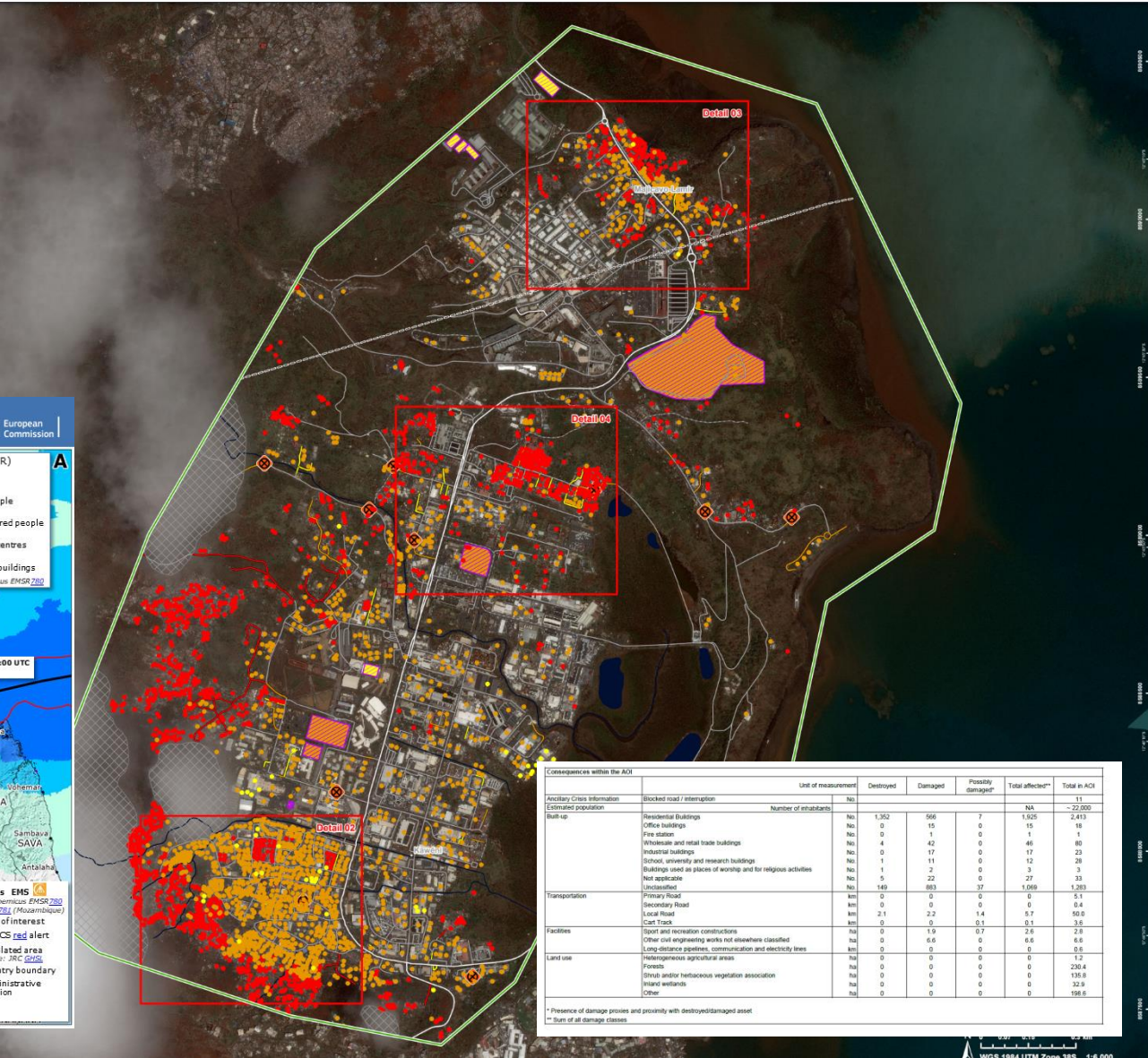
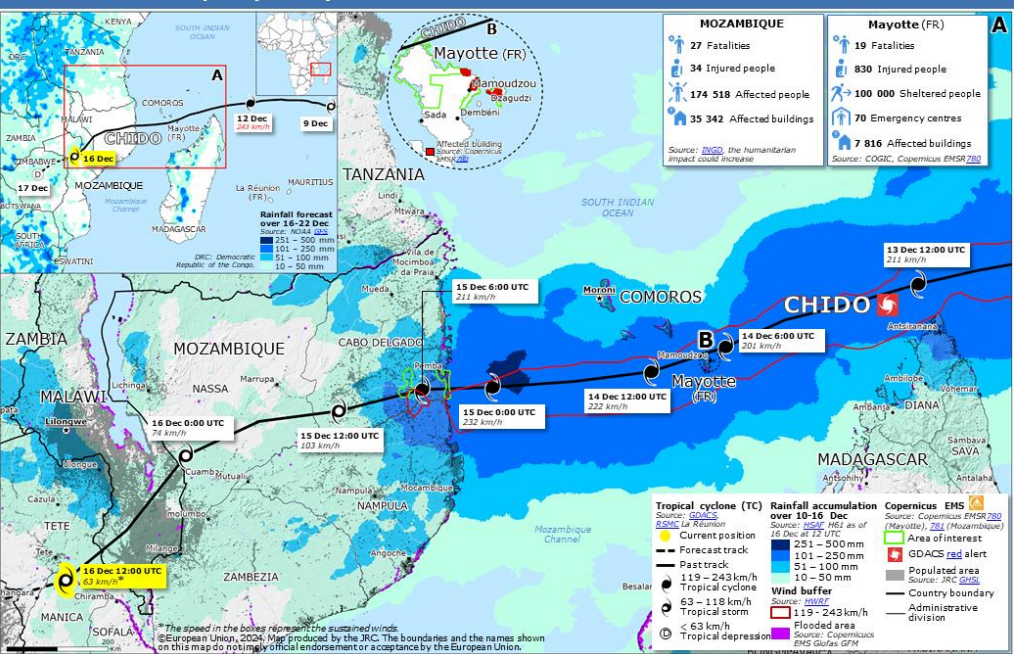
Situation awareness, ECHO funding decision making, ECHO field network, EU Protection Teams deployed, ECHO partners, international community, affected country, ...

Example of use

Various mapping products including for:

- Forecast
- Impact assessments
- Detailed damage assessments
- ...

Emergency Response Coordination Centre (ERCC) – DG ECHO Daily Map | 16/12/2024
Southeast Africa | Tropical cyclone CHIDO

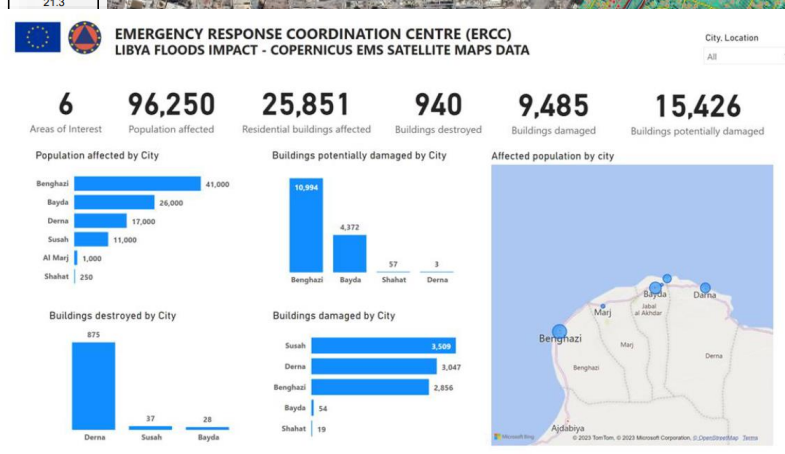


Example of use



Aerial view of Derna, Libya, on September 10-11, 2023. AYMAN AL-SAHILI / REUTERS

Consequences within the AOI						
	Unit of measurement	Destroyed	Damaged	Possibly damaged*	Total affected**	Total in AOI
Flood trace	ha					602.7
Flooded area	ha					21.3
Estimated population	Number of inhabitants	~ 17,000				
Built-up	Residential Buildings	No.	875	3,047	3	3,925
	Industrial buildings	No.	0	0	0	0
	School, university and research buildings	No.	0	7	0	7
	Hospital or institutional care buildings	No.	0	1	0	1
	Other non-residential buildings	No.	0	35	0	35
	Buildings used as places of worship and for religious activities	No.	0	3	0	3
	Cemetery	No.	0	7	0	7
	Hotel buildings	No.	1	0	0	1
	Communication buildings, stations, terminals and associated buildings	No.	0	0	0	0
	Unclassified	No.	0	0	0	0
Transportation	Harbours	ha	0.0	30.7	0.0	30.7
	Bridges and elevated highways	km	1.5	0.0	0.4	1.9
	Highways	km	2.4	1.9	2.5	6.8
	Primary Road	km	0.3	0.6	5.6	6.5
	Secondary Road	km	0.0	0.0	3.2	3.2
	Local Road	km	15.1	1.5	37.0	53.6
	Cart Track	km	0.0	0.0	2.8	2.8
	Harbours	km	0.0	0.0	0.0	0.0
Facilities	Breakwater	ha	0.0	0.0	0.0	0.0
	Dams	ha	0.6	0.0	0.0	0.6
	Power plant constructions	ha	0.0	0.0	0.0	0.0
	Sport and recreation constructions	ha	1.4	0.0	3.0	4.4
	Long-distance pipelines, communication and electricity lines	km	0.0	0.0	25.9	25.9
	Dams	km	0.3	0.0	0.0	0.3
Land use	Other	ha				345.1
	Shrub and/or herbaceous vegetation association	ha				190.8
	Forests	ha				56.1
	Open spaces with little or no vegetation	ha				23.1
	Heterogeneous agricultural areas	ha				8.9



Thank you