

DESTINATION EARTH

DESTINATION EARTH DATA LAKE

*AI for Preparedness: Building capacity for AI-powered
Disaster Risk Management*

Bruxelles, 17 June 2025



Funded by
the European Union

Destination Earth

implemented by



DESTINE DATA PORTFOLIO

DestinE Data Portfolio

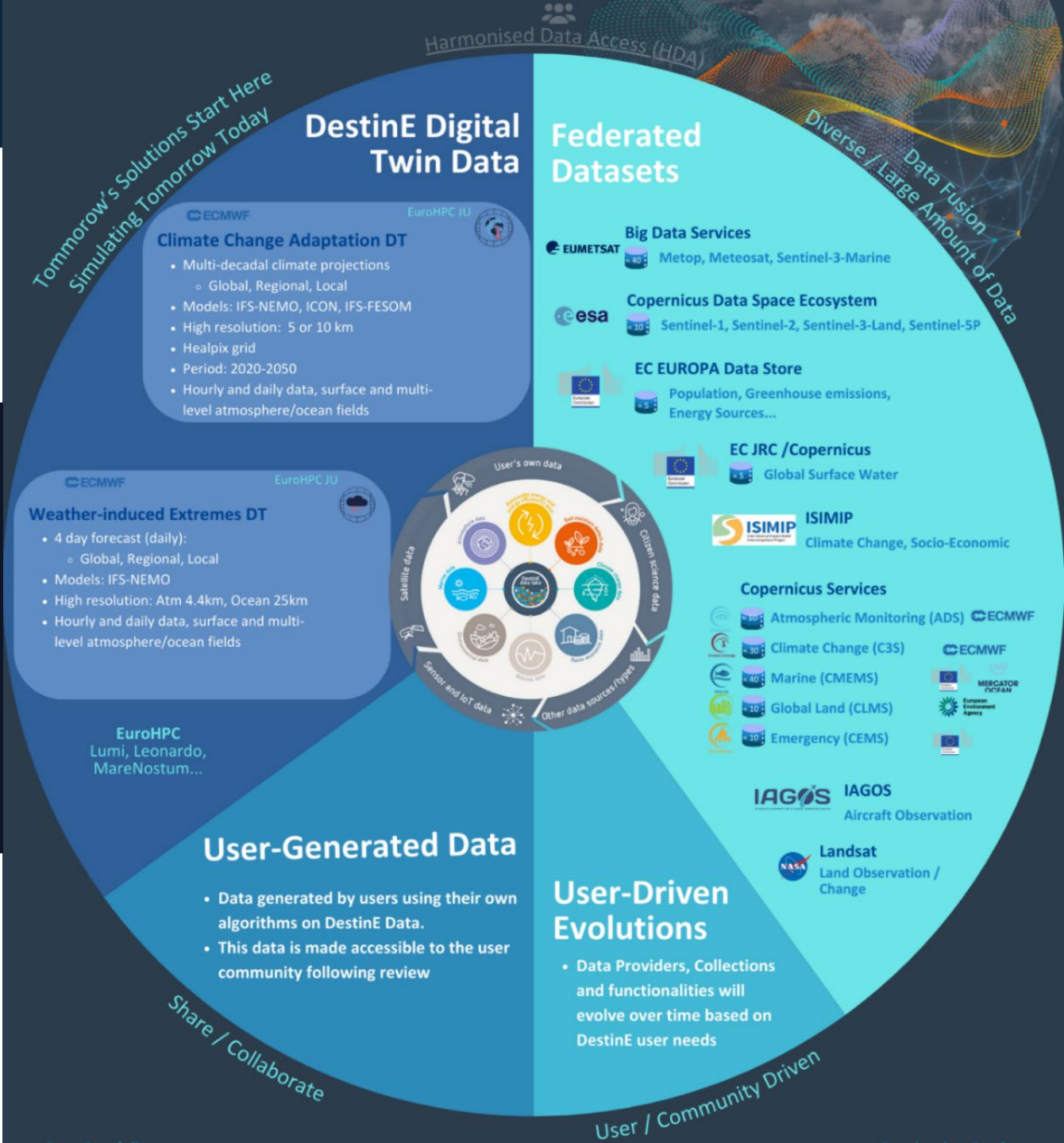
The DestinE Data Portfolio is tailored to user needs and composed of federated data, DestinE Digital Twins data and DestinE user generated data with a specified and agreed lifecycle.

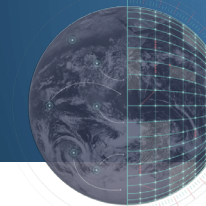
The DestinE Data Lake implements and provides access to this data catalogue following DestinE Access and Data governance through an HDA interface.

The Data Portfolio grows along DestinE lifecycle.

<https://platform.destine.eu/destine-data-portfolio/>

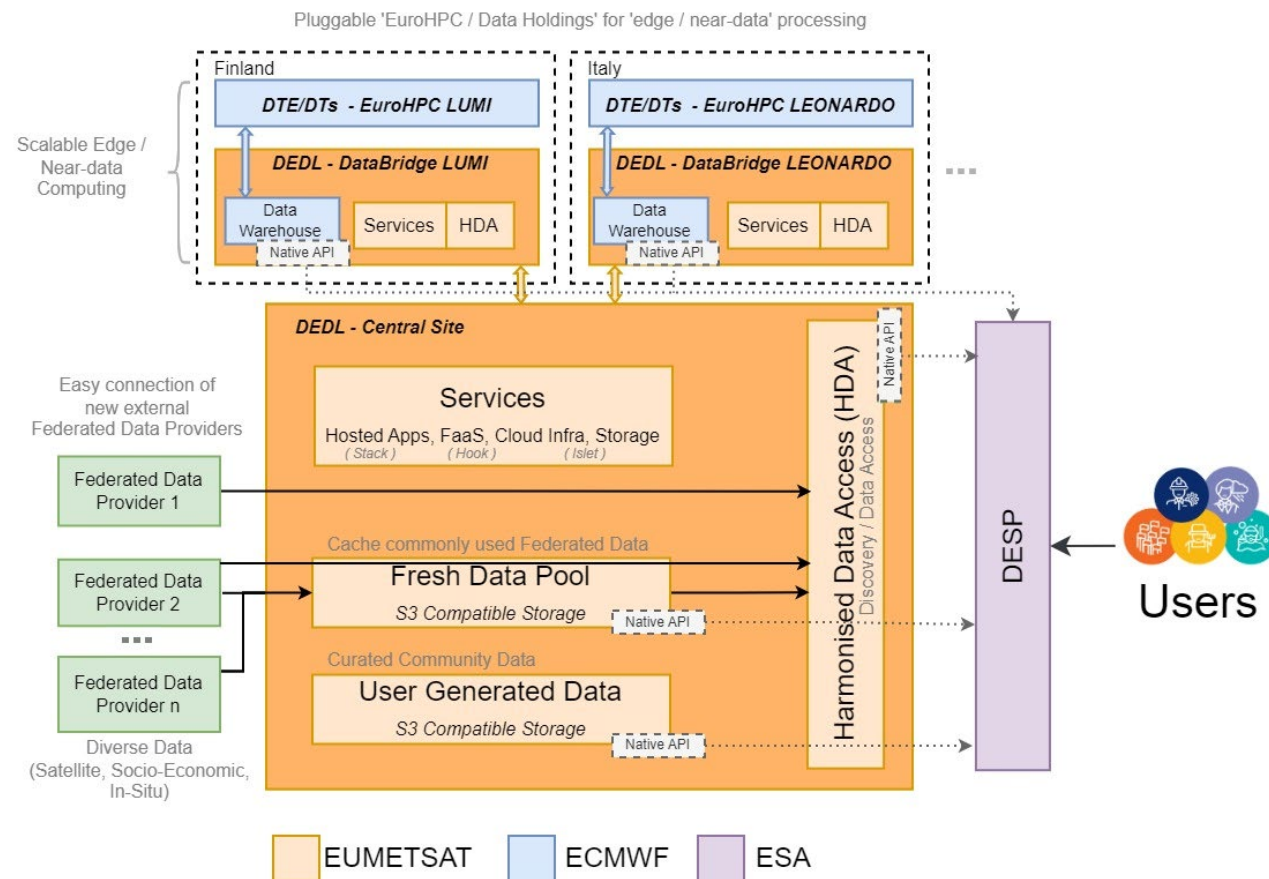
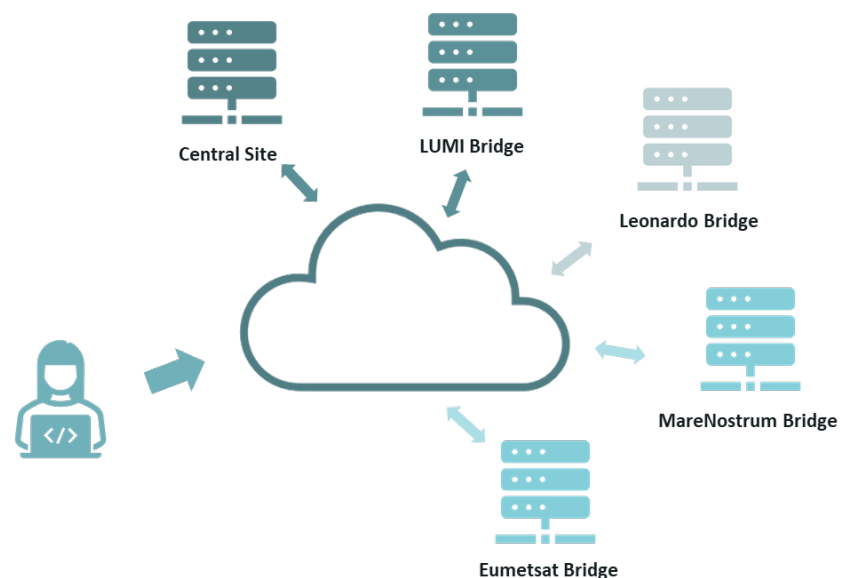
<https://data.destination-earth.eu/data-portfolio>





DESTINE DATA LAKE ARCHITECTURE

- Access to Digital Twin Data outputs
- Data Federation
- Distributed Infrastructure
- DTE-DEDL Reference Interface



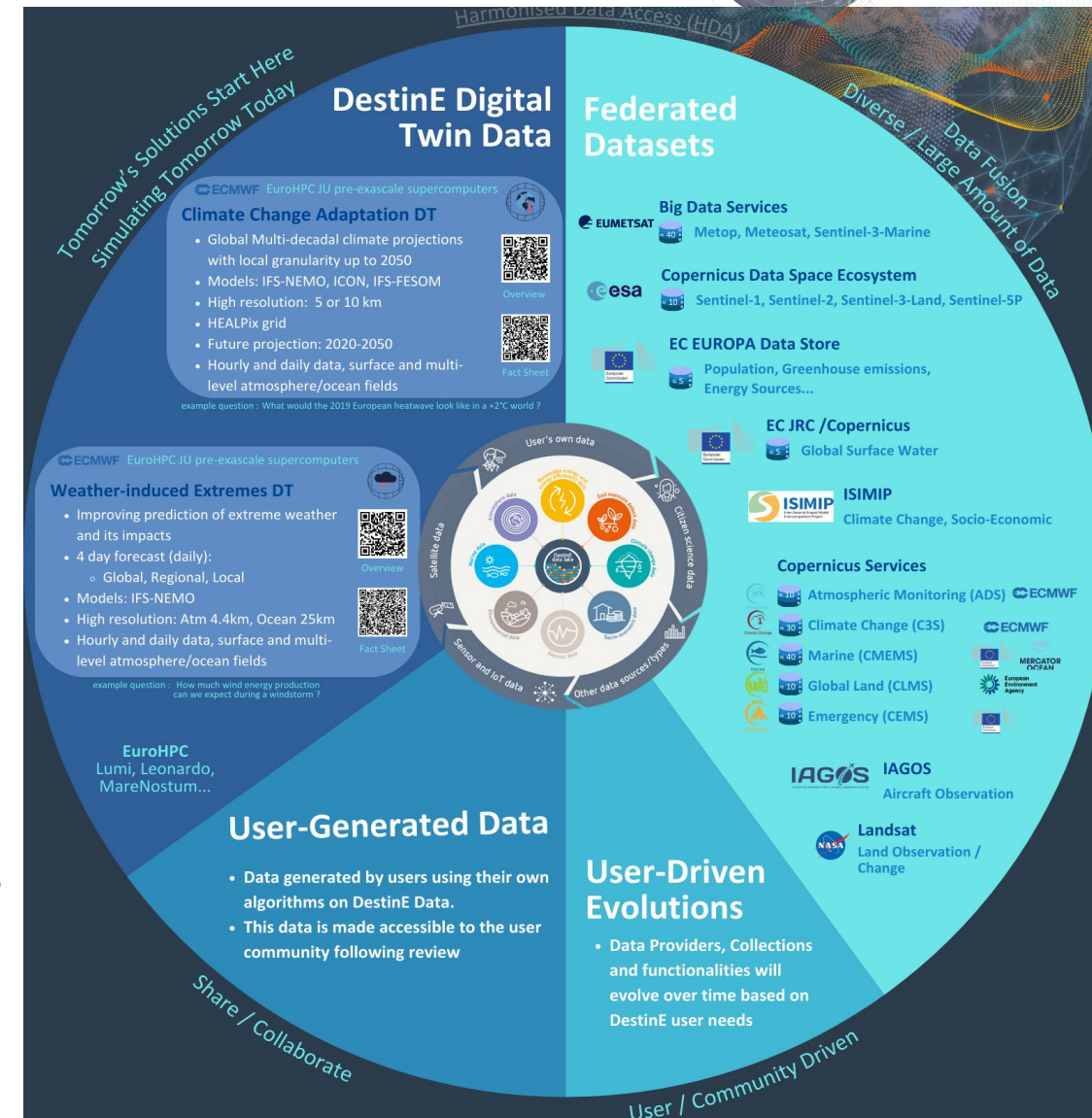
DESTINE DATA PORTFOLIO

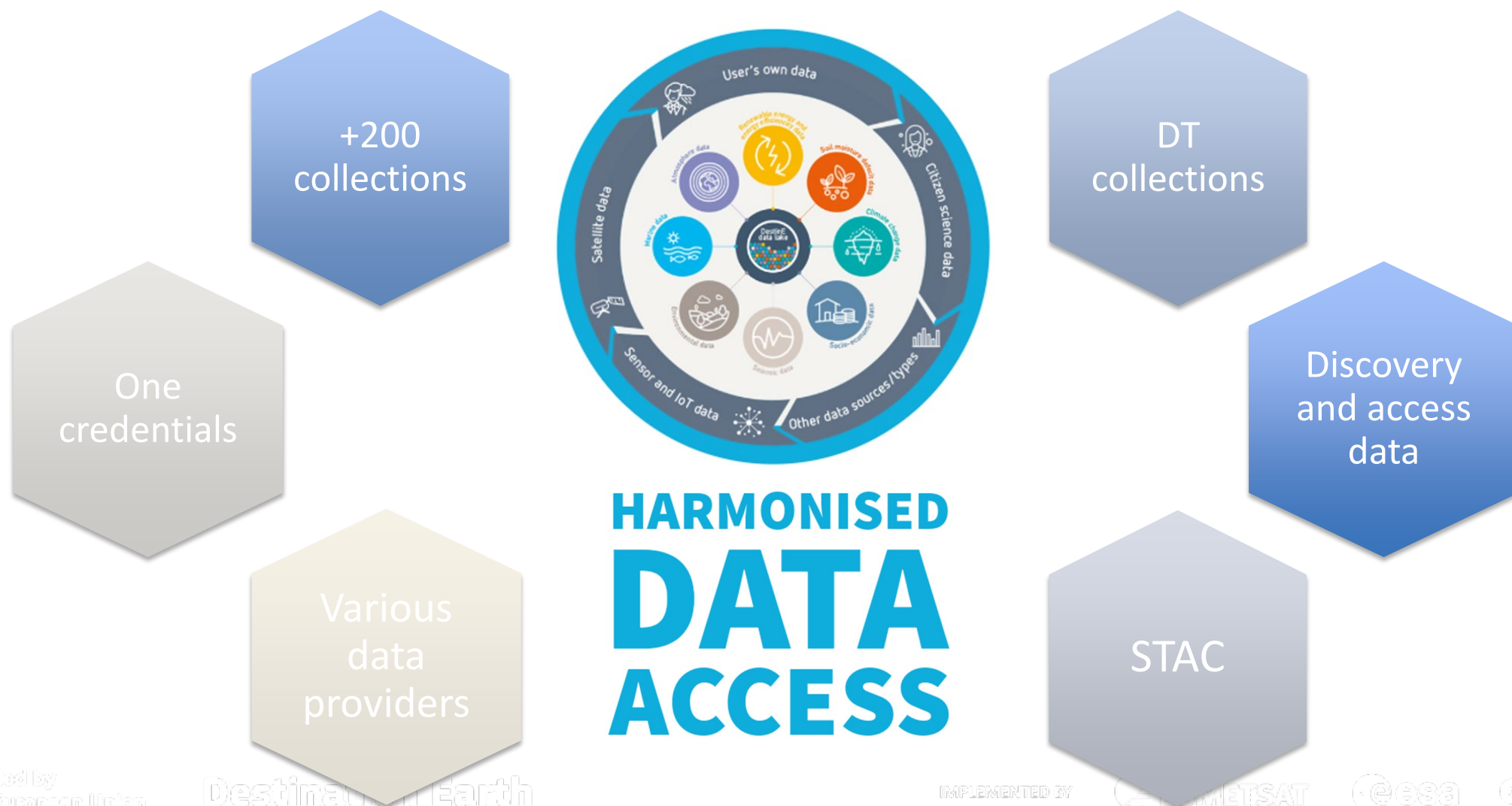
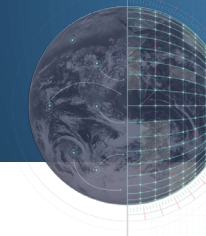
DestinE Data Lake offers a wide variety of data.

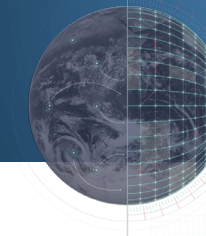
- Digital Twin Data.
- Federated datasets from various data spaces, also beyond traditional Earth Observation.
- User generated data.
- User-driven datasets, based on DestinE user needs.

This data portfolio is enabled by a harmonized data access solution (**HDA**) that abstracts away the heterogeneity and complexity of the underlying data sources.

<https://data.destination-earth.eu/data-portfolio>



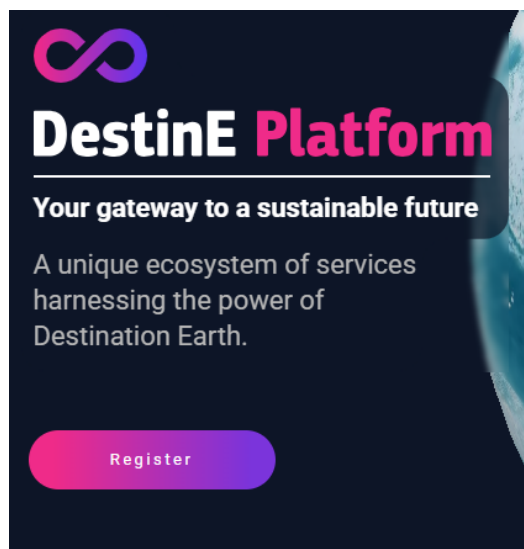




ACCESS TO DIGITAL TWIN DATA

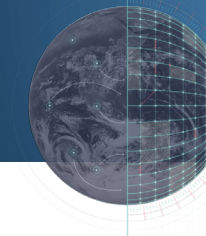
Step 1: Register <https://platform.destine.eu/>

Step 2: Apply for upgraded Access



How do I apply for Upgraded Access?

- After registering your DestinE Platform account, Sign In and select the Access Policy Upgrade link available under your profile.
- The available options for applying for Upgraded Access depend on your User Category, which is based on your User Profile. Make sure you fill in the User profile field in your Account Settings.
- Fill in the Access Policy Upgrade Request form as requested, accept the Terms & Conditions for DestinE Priority Users and submit your request.

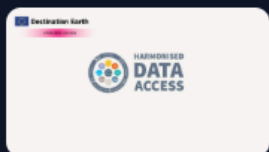


SERVICES TO ACCESS DATA FROM THE PORTFOLIO



EDEN

The EDEN service is a service providing access to a variety of datasets. It includes a direct interface to the HAD service to access native DestinE Digital Twins data.

[Go To Service](#)

HDA

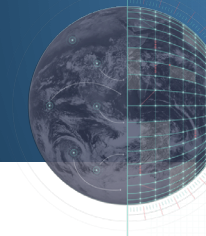
The Harmonised Data Access (HDA) is a service offering a STAC API allowing users to browse through the wide variety of data made available in the DestinE Data Portfolio, including the native DestinE Digital Twins data.

[Go To Service](#)

Polytope

The Polytope service is a service providing access to the full data portfolio of native DestinE Digital Twins data. These native data are shared in healpix projection and in the form of hypercubes.

[Go To Service](#)

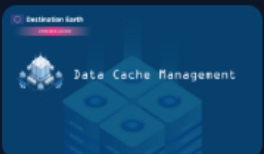


SERVICES TO ACCESS DATA FROM THE PORTFOLIO



SesameEO

The SesameEO service is a service providing a direct interface to different data access services making heterogeneous data easily accessible. It includes sources such as the HDA, to retrieve native DestinE Digital Twins data, the local Cache A of DestinE Platform, as well as Copernicus or Eurostat.

[Go To Service](#)

Data Cache Management

The Data Cache Management Service (DCMS) is a local storage on the DestinE Platform for frequently used data, flexible to be adapted to user needs. It contains a subset of DestinE Digital Twins data in ZARR format and lat-long projection.

[Go To Service](#)

DestinEStreamer

The DestinE Streamer service provides optimized data access through advanced compression and access techniques. Among others, it provides access to DestinE Digital Twins data retrieved from the DCMS.

[Go To Service](#)