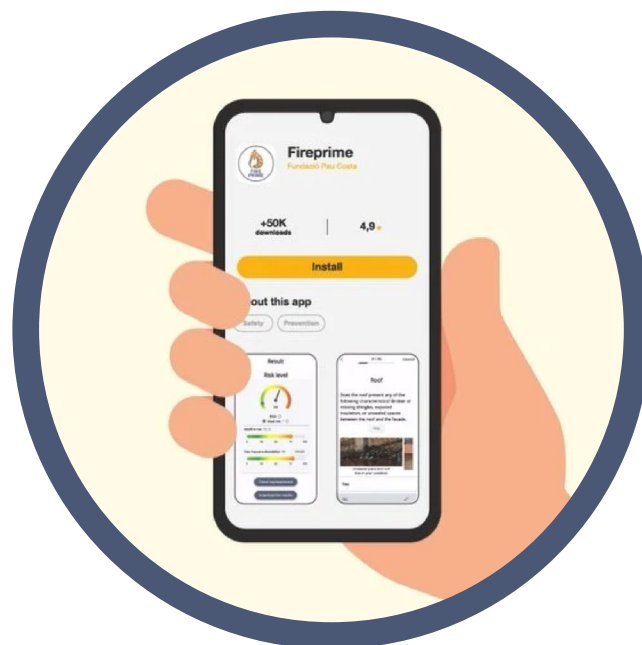


## Project Outputs

### Homeowner fire safety stream

Development of a smartphone application (App) for household wildfire vulnerability assessment, supporting residents in understanding and reducing their risk.

- The App integrates a structured model combining hazard, exposure, and vulnerability indicators related to building characteristics, surrounding vegetation, and preparedness conditions.
- It provides qualitative and quantitative outputs, along with tailored recommendations to improve home resilience and defensible space.
- The app can be used individually or within facilitated processes, enhancing its value as both a self-assessment and awareness tool.
- Available in Google Play and Apple



## Community Preparedness, Engagement and Education stream

Development and implementation of community-based approaches to increase awareness and preparedness.

- Preparedness Days, where residents, authorities, and stakeholders jointly assess risk, discuss scenarios, and identify actions, fostering dialogue and shared understanding.
- Educational tools for children and youth, including gamified learning activities, were also developed and implemented in non-formal settings, promoting learning-by-doing and long-term risk awareness.



## Resilient Infrastructure stream

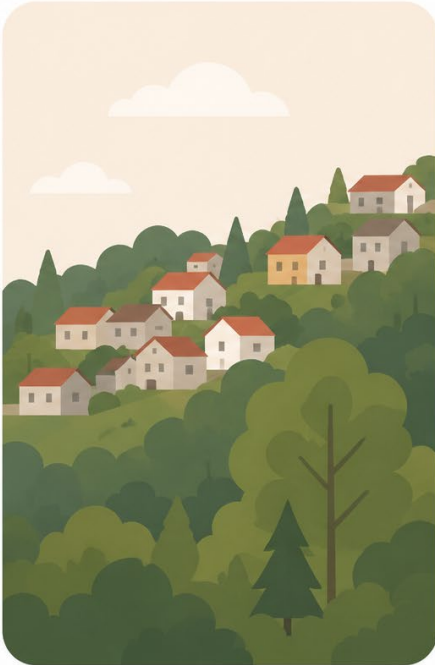
Development of wildfire risk assessment methodologies and guidance for industrial facilities and critical infrastructures.

- Guidelines to address vulnerabilities and potential wildfire impact pathways in assets such as chemical industries and electrical substations, combining technical analysis with stakeholder engagement.
- Tools tested in real contexts, supporting improved integration of wildfire risk into industrial safety and emergency planning.

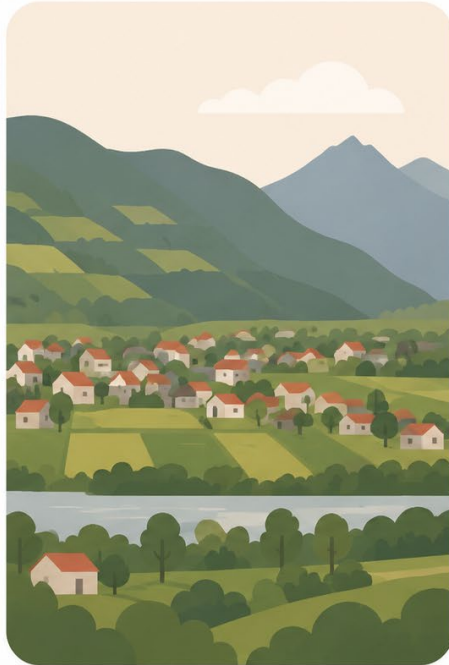


## Implementation in pilot sites (Spain, Austria, Sweden)

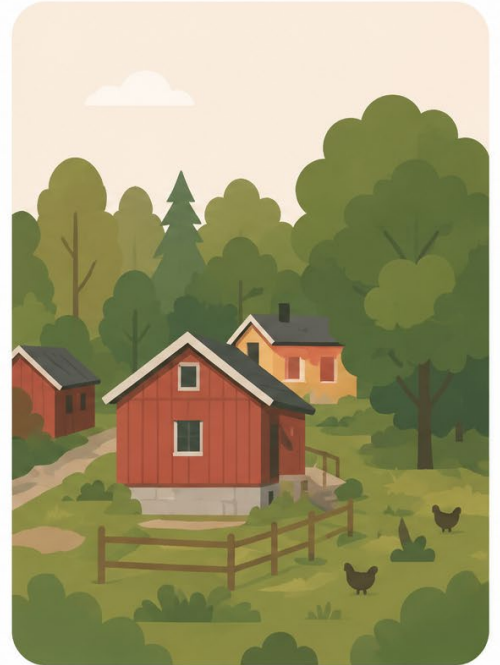
FIREPRIME tools were implemented and tested in three diverse contexts. The pilot regions validated the usability, adaptability, and effectiveness of the FIREPRIME approach.



In Sant Cugat (Spain), strong community engagement combined the App, Preparedness Days, and participatory processes.



In Austria, the focus included adapting educational and community-based tools.



In Sweden the emphasis was on household guidance and integration with existing communication practices.

## Sustainability and exploitation pathways

- Strategies to support long-term continuity and uptake, including governance models, exploitation pathways, and integration into civil protection frameworks.
- Attention given to scalability, the role of public authorities, and potential funding mechanisms and partnerships.



FIREPRIME has generated significant impacts across its target groups, including residents, communities, civil protection authorities, and infrastructure operators.

- Increased risk awareness, strengthened collaboration between communities and authorities, and promoted a culture of co-responsibility.
- Introduction of new approaches combining technical assessment with participatory processes, supporting more coordinated and informed local responses.
- Contribution to capacity building by providing practical tools applicable in operational contexts and demonstration on how science-based models can be translated into user-friendly tools combined with social approaches, bridging the gap between research and practice.



Co-funded by  
the European Union

FIREPRIME is co-funded by the European Union Civil Protection (Project GA101140381, FIREPRIME UCPM-2023-KAPP). Views and opinions expressed in this document are however, those of the author(s) only and do not necessarily reflect those of the European Union or the European Commission. Neither the European Union nor the granting authority can be held responsible for them.

